

## Olfactory receptor 10T2 Rabbit pAb

CatalogNo: YT3265

### Key Features

#### Host Species

- Rabbit

#### Reactivity

- Human

#### Applications

- WB,ELISA

#### MW

- 30kD (Observed)

#### Isotype

- IgG

### Recommended Dilution Ratios

**WB 1:500-1:2000**

**ELISA 1:20000**

**Not yet tested in other applications.**

### Storage

**Storage\*** -15°C to -25°C/1 year(Do not lower than -25°C)

**Formulation** Liquid in PBS containing 50% glycerol, 0.5% BSA and 0.02% sodium azide.

### Basic Information

**Clonality** Polyclonal

### Immunogen Information

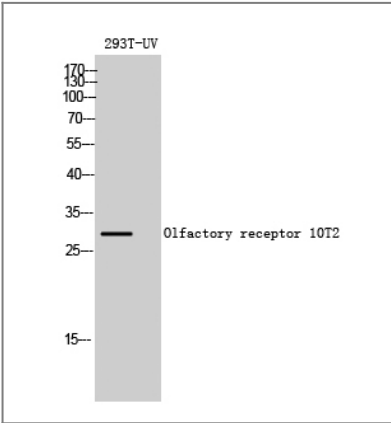
**Immunogen** The antiserum was produced against synthesized peptide derived from human OR10T2. AA range:231-280

**Specificity** Olfactory receptor 10T2 Polyclonal Antibody detects endogenous levels of Olfactory receptor 10T2 protein.

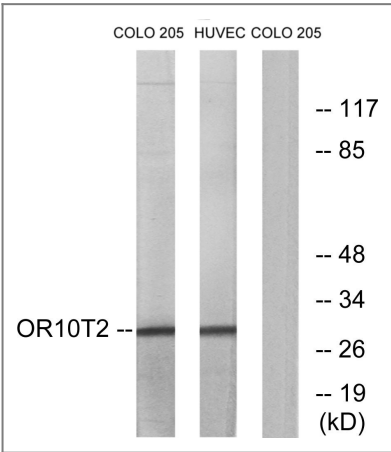
### Target Information

Gene name	OR10T2		
Protein Name	Olfactory receptor 10T2		
	Organism	Gene ID	UniProt ID
	Human	<a href="#">128360</a> ;	<a href="#">Q8NGX3</a> ;
Cellular Localization	Cell membrane; Multi-pass membrane protein.		
Function	Function:Odorant receptor .,similarity:Belongs to the G-protein coupled receptor 1 family.,		

Validation Data



Western Blot analysis of 293T-UV cells using Olfactory receptor 10T2 Polyclonal Antibody diluted at 1:500



Western blot analysis of lysates from HUVEC and COLO cells, using OR10T2 Antibody. The lane on the right is blocked with the synthesized peptide.

Contact information

Orders: order@immunoway.com  
Support: tech@immunoway.com  
Telephone: 877-594-3616 (Toll Free), 408-747-0185  
Website: http://www.immunoway.com  
Address: 2200 Ringwood Ave San Jose, CA 95131 USA



Please scan the QR code  
to access additional  
product information:  
**Olfactory receptor  
10T2 Rabbit pAb**

---

For Research Use Only. Not for Use in Diagnostic Procedures.

[Antibody](#) | [ELISA Kits](#) | [Protein](#) | [Reagents](#)