

# Olfactory receptor 10H1 Rabbit pAb

CatalogNo: YT3254

## Key Features

### Host Species

- Rabbit

### Reactivity

- Human

### Applications

- WB,IF,ELISA

### MW

- 35kD (Observed)

### Isotype

- IgG

## Storage

**Storage\*** -15°C to -25°C/1 year(Do not lower than -25°C)

**Formulation** Liquid in PBS containing 50% glycerol, 0.5% BSA and 0.02% sodium azide.

## Recommended Dilution Ratios

**WB 1:500-1:2000**

**IF 1:200-1:1000**

**ELISA 1:20000**

**Not yet tested in other applications.**

## Basic Information

**Clonality** Polyclonal

## Immunogen Information

**Immunogen** The antiserum was produced against synthesized peptide derived from human OR10H1. AA range:236-285

**Specificity** Olfactory receptor 10H1 Polyclonal Antibody detects endogenous levels of Olfactory receptor 10H1 protein.

## Target Information

**Gene name** OR10H1

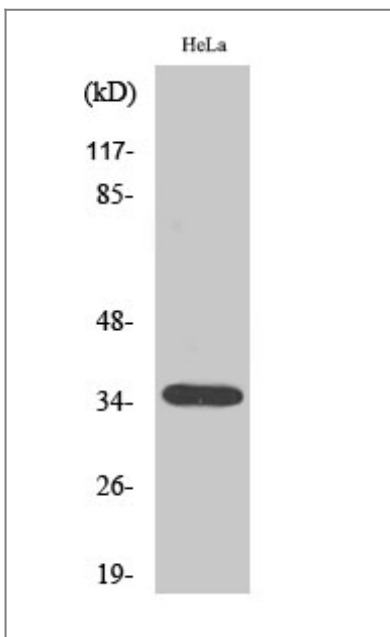
**Protein Name** Olfactory receptor 10H1

| Organism | Gene ID                | UniProt ID              |
|----------|------------------------|-------------------------|
| Human    | <a href="#">26539;</a> | <a href="#">Q9Y4A9;</a> |

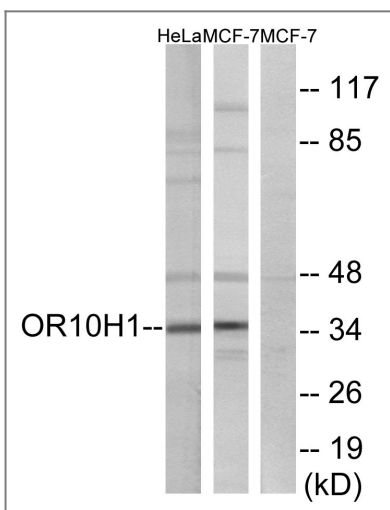
**Cellular Localization** Cell membrane; Multi-pass membrane protein.

**Function** Function:Odorant receptor .,similarity:Belongs to the G-protein coupled receptor 1 family.,

## Validation Data



Western Blot analysis of various cells using Olfactory receptor 10H1 Polyclonal Antibody



Western blot analysis of lysates from HeLa and MCF-7 cells, using OR10H1 Antibody. The lane on the right is blocked with the synthesized peptide.

## | Contact information

Orders: order@immunoway.com  
Support: tech@immunoway.com  
Telephone: 877-594-3616 (Toll Free), 408-747-0185  
Website: <http://www.immunoway.com>  
Address: 2200 Ringwood Ave San Jose, CA 95131 USA



Please scan the QR code to access additional product information:  
**Olfactory receptor  
10H1 Rabbit pAb**

---

For Research Use Only. Not for Use in Diagnostic Procedures.

[Antibody](#) | [ELISA Kits](#) | [Protein](#) | [Reagents](#)