

Olfactory receptor 10A7 Rabbit pAb

CatalogNo: YT3244

Key Features

Host Species

- Rabbit

Reactivity

- Human

Applications

- WB,ELISA

MW

- 36kD (Observed)

Isotype

- IgG

Recommended Dilution Ratios

WB 1:500-1:2000

ELISA 1:20000

Not yet tested in other applications.

Storage

Storage* -15°C to -25°C/1 year(Do not lower than -25°C)

Formulation Liquid in PBS containing 50% glycerol, 0.5% BSA and 0.02% sodium azide.

Basic Information

Clonality Polyclonal

Immunogen Information

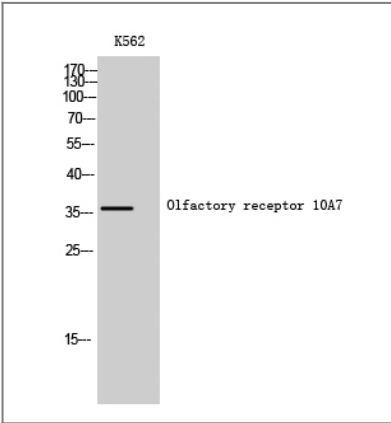
Immunogen The antiserum was produced against synthesized peptide derived from human OR10A7. AA range:234-283

Specificity Olfactory receptor 10A7 Polyclonal Antibody detects endogenous levels of Olfactory receptor 10A7 protein.

Target Information

Gene name	OR10A7		
Protein Name	Olfactory receptor 10A7		
	Organism	Gene ID	UniProt ID
	Human	121364 ;	Q8NGE5 ;
Cellular Localization	Cell membrane; Multi-pass membrane protein.		
Function	Function:Odorant receptor .,similarity:Belongs to the G-protein coupled receptor 1 family.,		

Validation Data



Western Blot analysis of K562 cells using Olfactory receptor 10A7 Polyclonal Antibody

Contact information

Orders:

order@immunoway.com

Support:

tech@immunoway.com

Telephone:

877-594-3616 (Toll Free), 408-747-0185

Website:

http://www.immunoway.com

Address:

2200 Ringwood Ave San Jose, CA 95131 USA



Please scan the QR code to access additional product information:

Olfactory receptor 10A7 Rabbit pAb

For Research Use Only. Not for Use in Diagnostic Procedures.

[Antibody](#) | [ELISA Kits](#) | [Protein](#) | [Reagents](#)