

O-FucT-1 Rabbit pAb

CatalogNo: YT3237

| Key Features

Host Species

- Rabbit

Reactivity

- Human, Mouse, Rat

Applications

- WB, IHC, IF, ELISA

MW

- 44kD (Observed)

Isotype

- IgG

| Recommended Dilution Ratios

WB 1:500-1:2000

IHC 1:100-1:300

ELISA 1:40000

IF 1:50-200

| Storage

Storage*

-15°C to -25°C/1 year (Do not lower than -25°C)

Formulation

Liquid in PBS containing 50% glycerol, 0.5% BSA and 0.02% sodium azide.

| Basic Information

Clonality

Polyclonal

| Immunogen Information

Immunogen

The antiserum was produced against synthesized peptide derived from human POFUT1. AA range: 331-380

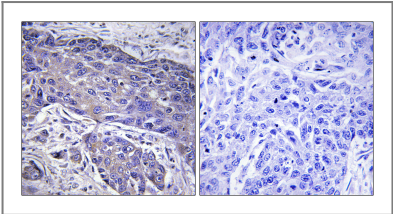
Specificity

O-FucT-1 Polyclonal Antibody detects endogenous levels of O-FucT-1 protein.

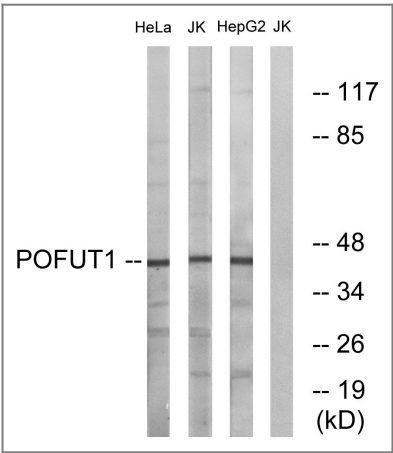
| Target Information

Gene name	POFUT1		
Protein Name	GDP-fucose protein O-fucosyltransferase 1		
	Organism	Gene ID	UniProt ID
	Human	23509;	Q9H488;
	Mouse	140484;	Q91ZW2;
	Rat	311551;	Q6EV70;
Cellular Localization	Endoplasmic reticulum .		
Tissue specificity	Highly expressed in heart, brain, placenta, lung, liver, skeletal muscle, kidney and pancreas.		
Function	Catalytic activity:Transfers an alpha-L-fucosyl residue from GDP-beta-L-fucose to the serine hydroxy group of a protein acceptor.,cofactor:Manganese.,Function:Catalyzes the reaction that attaches fucose through an O-glycosidic linkage to a conserved serine or threonine residue in EGF domains. Plays a crucial role in Notch signaling.,online information:GlycoGene database,online information:Peptide-O-fucosyltransferase 1,pathway:Protein modification; protein glycosylation.,similarity:Belongs to the glycosyltransferase 68 family.,tissue specificity:Highly expressed in heart, brain, placenta, lung, liver, skeletal muscle, kidney and pancreas.,		

| Validation Data



Immunohistochemistry analysis of paraffin-embedded human lung carcinoma tissue, using POFUT1 Antibody. The picture on the right is blocked with the synthesized peptide.



Western blot analysis of lysates from Jurkat, HeLa, and HepG2 cells, using POFUT1 Antibody. The lane on the right is blocked with the synthesized peptide.

| Contact information

Orders: order@immunoway.com
Support: tech@immunoway.com
Telephone: 877-594-3616 (Toll Free), 408-747-0185
Website: http://www.immunoway.com
Address: 2200 Ringwood Ave San Jose, CA 95131 USA



Please scan the QR code
to access additional
product information:
**O-FucT-1 Rabbit
pAb**

For Research Use Only. Not for Use in Diagnostic Procedures.

[Antibody](#) | [ELISA Kits](#) | [Protein](#) | [Reagents](#)