

## OBCAM Rabbit pAb

CatalogNo: YT3225

### | Key Features

#### Host Species

- Rabbit

#### Reactivity

- Human, Mouse, Rat, Monkey

#### Applications

- WB, ELISA

#### MW

- 58kD (Observed)

#### Isotype

- IgG

### | Recommended Dilution Ratios

**WB 1:500-1:2000**

**ELISA 1:10000**

**Not yet tested in other applications.**

### | Storage

#### Storage\*

-15°C to -25°C/1 year (Do not lower than -25°C)

#### Formulation

Liquid in PBS containing 50% glycerol, 0.5% BSA and 0.02% sodium azide.

### | Basic Information

#### Clonality

Polyclonal

### | Immunogen Information

#### Immunogen

The antiserum was produced against synthesized peptide derived from human OBCAM. AA range: 152-201

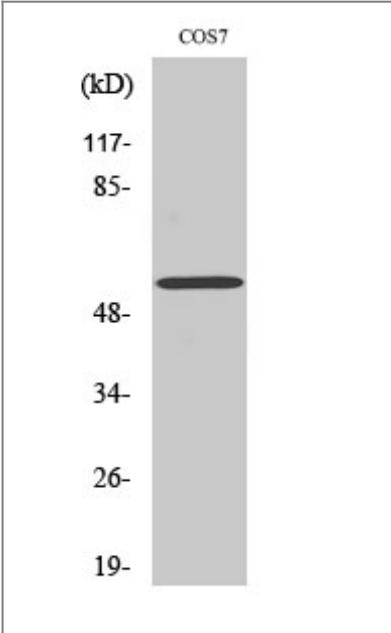
#### Specificity

OBCAM Polyclonal Antibody detects endogenous levels of OBCAM protein.

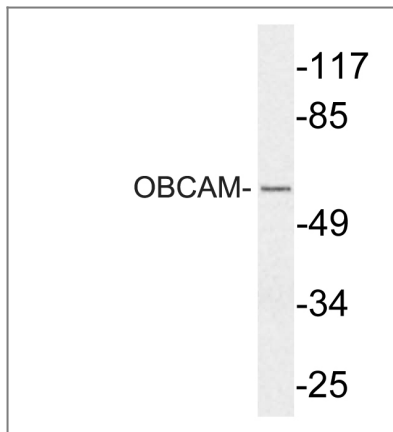
### | Target Information

Gene name	OPCML		
Protein Name	Opioid-binding protein/cell adhesion molecule		
	Organism	Gene ID	UniProt ID
	Human	<a href="#">4978</a> ;	<a href="#">Q14982</a> ;
	Rat	<a href="#">116597</a> ;	<a href="#">P32736</a> ;
Cellular Localization	Cell membrane ; Lipid-anchor, GPI-anchor .		
Tissue specificity	Amygdala,Brain,Fetal brain,Human amygdala,Occipital		
Function	Disease:Defects in OPCML are associated with ovarian cancer [MIM:167000]. Ovarian cancer is the leading cause of death from gynecologic malignancy. It is characterized by advanced presentation with loco-regional dissemination in the peritoneal cavity and the rare incidence of visceral metastases. These typical features relate to the biology of the disease, which is a principal determinant of outcome.,Function:Binds opioids in the presence of acidic lipids; probably involved in cell contact.,similarity:Belongs to the immunoglobulin superfamily. IgLON family.,similarity:Contains 3 Ig-like C2-type (immunoglobulin-like) domains.,		

| Validation Data



Western Blot analysis of various cells using OBCAM Polyclonal Antibody diluted at 1:1000



Western blot analysis of lysate from COS7 cells, using OBCAM antibody.

## Contact information

Orders: [order@immunoway.com](mailto:order@immunoway.com)  
Support: [tech@immunoway.com](mailto:tech@immunoway.com)  
Telephone: 877-594-3616 (Toll Free), 408-747-0185  
Website: <http://www.immunoway.com>  
Address: 2200 Ringwood Ave San Jose, CA 95131 USA



Please scan the QR code  
to access additional  
product information:  
**OBCAM Rabbit pAb**

For Research Use Only. Not for Use in Diagnostic Procedures.

[Antibody](#) | [ELISA Kits](#) | [Protein](#) | [Reagents](#)