

OATP-C Rabbit pAb

CatalogNo: YT3222

Key Features

Host Species

- Rabbit

Reactivity

- Human

Applications

- WB,ELISA

MW

- 76kD (Observed)

Isotype

- IgG

Recommended Dilution Ratios

WB 1:500-1:2000

ELISA 1:40000

Not yet tested in other applications.

Storage

Storage* -15°C to -25°C/1 year(Do not lower than -25°C)

Formulation Liquid in PBS containing 50% glycerol, 0.5% BSA and 0.02% sodium azide.

Basic Information

Clonality Polyclonal

Immunogen Information

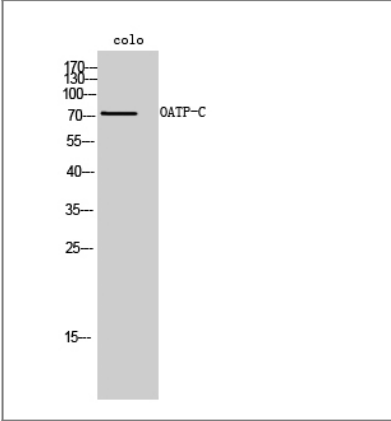
Immunogen The antiserum was produced against synthesized peptide derived from human SLCO1B1. AA range:251-300

Specificity OATP-C Polyclonal Antibody detects endogenous levels of OATP-C protein.

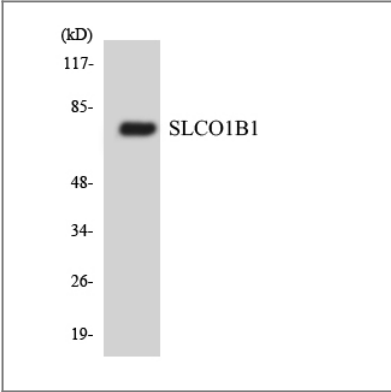
Target Information

Gene name	SLCO1B1		
Protein Name	Solute carrier organic anion transporter family member 1B1		
	Organism	Gene ID	UniProt ID
	Human	10599 ;	Q9Y6L6 ;
Cellular Localization	Basolateral cell membrane ; Multi-pass membrane protein . Detected in basolateral membranes of hepatocytes.		
Tissue specificity	Highly expressed in liver, at the basolateral membranes of centrilobular hepatocytes. Not detected in heart, brain, placenta, lung, skeletal muscle, kidney, pancreas, spleen, thymus, prostate, testis, ovary, small intestine, colon and leukocyte.		
Function	Function:Mediates the Na(+)-independent transport of organic anions such as pravastatin, taurocholate, methotrexate, dehydroepiandrosterone sulfate, 17-beta-glucuronosyl estradiol, estrone sulfate, prostaglandin E2, thromboxane B2, leukotriene C3, leukotriene E4, thyroxine and triiodothyronine. May play an important role in the clearance of bile acids and organic anions from the liver.,similarity:Belongs to the organo anion transporter (TC 2.A.60) family.,subcellular location:Detected in basolateral membranes of hepatocytes.,tissue specificity:Highly expressed in liver. Not detected in heart, brain, placenta, lung, skeletal muscle, kidney, pancreas, spleen, thymus, prostate, testis, ovary, small intestine, colon and leukocyte.,		

Validation Data



Western Blot analysis of colo cells using OATP-C Polyclonal Antibody



Western blot analysis of the lysates from HUVECcells using SLCO1B1 antibody.

| Contact information

Orders: order@immunoway.com
Support: tech@immunoway.com
Telephone: 877-594-3616 (Toll Free), 408-747-0185
Website: <http://www.immunoway.com>
Address: 2200 Ringwood Ave San Jose, CA 95131 USA



Please scan the QR code
to access additional
product information:

OATP-C Rabbit pAb

For Research Use Only. Not for Use in Diagnostic Procedures.

[Antibody](#) | [ELISA Kits](#) | [Protein](#) | [Reagents](#)