

Nup93 Rabbit pAb

CatalogNo: YT3212

| Key Features

Host Species

- Rabbit

Reactivity

- Human, Mouse, Rat

Applications

- WB, ELISA

MW

- 93kD (Observed)

Isotype

- IgG

| Recommended Dilution Ratios

WB 1:500-1:2000

ELISA 1:40000

Not yet tested in other applications.

| Storage

Storage*

-15°C to -25°C/1 year (Do not lower than -25°C)

Formulation

Liquid in PBS containing 50% glycerol, 0.5% BSA and 0.02% sodium azide.

| Basic Information

Clonality

Polyclonal

| Immunogen Information

Immunogen

The antiserum was produced against synthesized peptide derived from human NUP93. AA range: 221-270

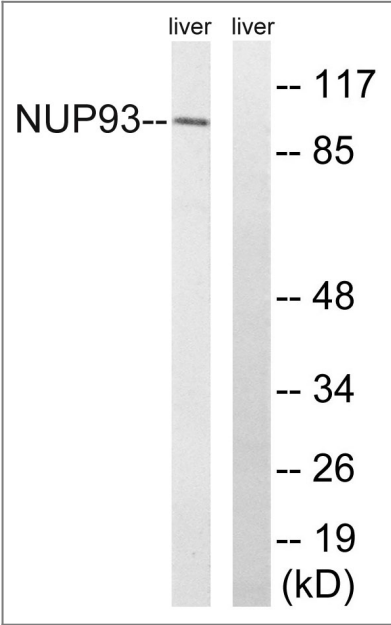
Specificity

Nup93 Polyclonal Antibody detects endogenous levels of Nup93 protein.

| Target Information

Gene name	NUP93		
Protein Name	Nuclear pore complex protein Nup93		
	Organism	Gene ID	UniProt ID
	Human	9688 ;	Q8N1F7 ;
	Mouse	71805 ;	Q8BJ71 ;
	Rat	291874 ;	Q66HC5 ;
Cellular Localization	Nucleus membrane ; Peripheral membrane protein . Nucleus, nuclear pore complex . Nucleus envelope . Localizes at the nuclear basket and at or near the nuclear entry to the gated channel of the pore. .		
Tissue specificity	Amygdala,Bone marrow,Brain,Epithelium,Skin,		
Function	Function:Part of the nucleoporin complex; required for correct nuclear pore assembly.,similarity:Belongs to the nucleoporin interacting component (NIC) family.,subcellular location:Localizes at the nuclear basket and at or near the nuclear entry to the gated channel of the pore.,subunit:Component of the p62 complex, a complex composed of NUP62, NUP54. Interacts also with NUP205.,		

| Validation Data



Western blot analysis of lysates from rat liver cells, using NUP93 Antibody. The lane on the right is blocked with the synthesized peptide.

| Contact information

Orders: order@immunoway.com
Support: tech@immunoway.com
Telephone: 877-594-3616 (Toll Free), 408-747-0185
Website: http://www.immunoway.com
Address: 2200 Ringwood Ave San Jose, CA 95131 USA



Please scan the QR code
to access additional
product information:
Nup93 Rabbit pAb

For Research Use Only. Not for Use in Diagnostic Procedures.

[Antibody](#) | [ELISA Kits](#) | [Protein](#) | [Reagents](#)