

NPY5-R Rabbit pAb

CatalogNo: YT3185

Key Features

Host Species

- Rabbit

Reactivity

- Human, Mouse, Rat

Applications

- WB, IHC, IF, ELISA

MW

- 48kD (Observed)

Isotype

- IgG

Recommended Dilution Ratios

WB 1:500-1:2000

IHC 1:100-1:300

IF 1:200-1:1000

ELISA 1:20000

Not yet tested in other applications.

Storage

Storage*

-15°C to -25°C/1 year (Do not lower than -25°C)

Formulation

Liquid in PBS containing 50% glycerol, 0.5% BSA and 0.02% sodium azide.

Basic Information

Clonality

Polyclonal

Immunogen Information

Immunogen

The antiserum was produced against synthesized peptide derived from human NPY5R. AA range: 221-270

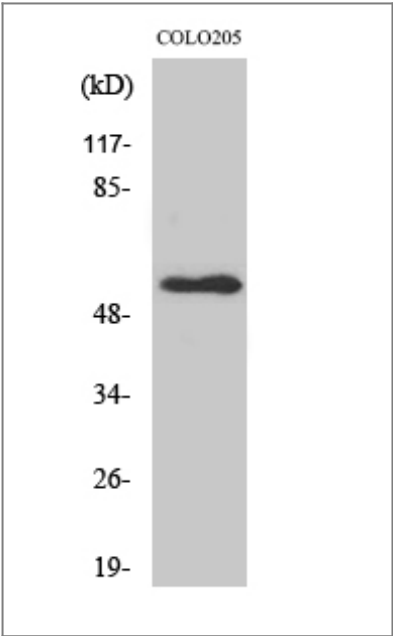
Specificity

NPY5-R Polyclonal Antibody detects endogenous levels of NPY5-R protein.

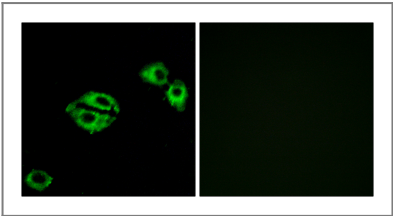
Target Information

Gene name	NPY5R		
Protein Name	Neuropeptide Y receptor type 5		
	Organism	Gene ID	UniProt ID
	Human	4889 ;	Q15761 ;
	Mouse	18168 ;	O70342 ;
	Rat	25340 ;	Q63634 ;
Cellular Localization	Cell membrane; Multi-pass membrane protein.		
Tissue specificity	Brain; hypothalamus.		
Function	Function:Receptor for neuropeptide Y and peptide YY. The activity of this receptor is mediated by G proteins that inhibit adenylate cyclase activity. Seems to be associated with food intake. Could be involved in feeding disorders.,similarity:Belongs to the G-protein coupled receptor 1 family.,tissue specificity:Brain; hypothalamus.,		

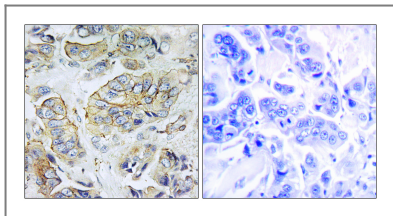
Validation Data



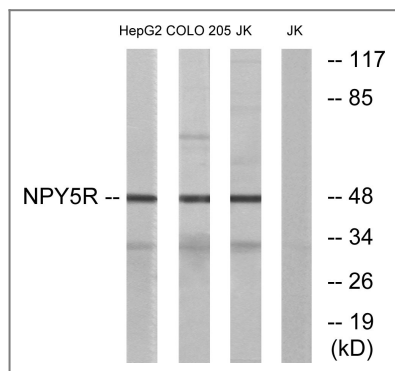
Western Blot analysis of various cells using NPY5-R Polyclonal Antibody



Immunofluorescence analysis of A549 cells, using NPY5R Antibody. The picture on the right is blocked with the synthesized peptide.



Immunohistochemistry analysis of paraffin-embedded human breast carcinoma tissue, using NPY5R Antibody. The picture on the right is blocked with the synthesized peptide.



Western blot analysis of lysates from COLO, Jurkat, and HepG2 cells, using NPY5R Antibody. The lane on the right is blocked with the synthesized peptide.

Contact information

Orders: order@immunoway.com
 Support: tech@immunoway.com
 Telephone: 877-594-3616 (Toll Free), 408-747-0185
 Website: <http://www.immunoway.com>
 Address: 2200 Ringwood Ave San Jose, CA 95131 USA



Please scan the QR code to access additional product information:
NPY5-R Rabbit pAb

For Research Use Only. Not for Use in Diagnostic Procedures.

[Antibody](#) | [ELISA Kits](#) | [Protein](#) | [Reagents](#)