

NPA1 Rabbit pAb

CatalogNo: YT3178

Key Features

Host Species

- Rabbit

Reactivity

- Human, Mouse

Applications

- IHC, IF, ELISA

MW

- 254kD (Calculated)

Isotype

- IgG

Recommended Dilution Ratios

IHC 1:100-1:300

ELISA 1:40000

IF 1:50-200

Storage

Storage*

-15°C to -25°C/1 year (Do not lower than -25°C)

Formulation

Liquid in PBS containing 50% glycerol, 0.5% BSA and 0.02% sodium azide.

Basic Information

Clonality

Polyclonal

Immunogen Information

Immunogen

The antiserum was produced against synthesized peptide derived from human URB1. AA range: 2013-2062

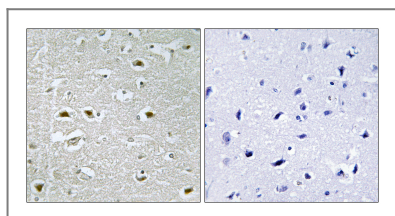
Specificity

NPA1 Polyclonal Antibody detects endogenous levels of NPA1 protein.

Target Information

Gene name	URB1		
Protein Name	Nucleolar pre-ribosomal-associated protein 1		
	Organism	Gene ID	UniProt ID
	Human	9875;	O60287;
	Mouse		Q571H0;
Cellular Localization	Nucleus, nucleolus .		
Tissue specificity	Brain,Epithelium,Placenta,T-cell,		

Validation Data



Immunohistochemistry analysis of paraffin-embedded human brain, using URB1 Antibody. The picture on the right is blocked with the synthesized peptide.

Contact information

Orders: order@immunoway.com
 Support: tech@immunoway.com
 Telephone: 877-594-3616 (Toll Free), 408-747-0185
 Website: <http://www.immunoway.com>
 Address: 2200 Ringwood Ave San Jose, CA 95131 USA



Please scan the QR code
 to access additional
 product information:
NPA1 Rabbit pAb

For Research Use Only. Not for Use in Diagnostic Procedures.

[Antibody](#) | [ELISA Kits](#) | [Protein](#) | [Reagents](#)