

## NP220 Rabbit pAb

CatalogNo: YT3177

Orthogonal Validated 

### Key Features

#### Host Species

- Rabbit

#### Reactivity

- Human, Mouse

#### Applications

- WB, IHC, IF, ELISA

#### MW

- 220kD (Observed)

#### Isotype

- IgG

### Recommended Dilution Ratios

WB 1:500-1:2000

IHC 1:100-1:300

ELISA 1:20000

IF 1:50-200

### Storage

**Storage\*** -15°C to -25°C/1 year (Do not lower than -25°C)**Formulation** Liquid in PBS containing 50% glycerol, 0.5% BSA and 0.02% sodium azide.

### Basic Information

**Clonality** Polyclonal

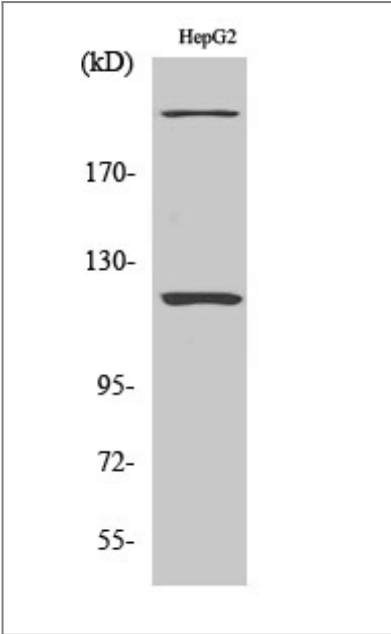
### Immunogen Information

**Immunogen** The antiserum was produced against synthesized peptide derived from human ZNF638. AA range: 1271-1320**Specificity** NP220 Polyclonal Antibody detects endogenous levels of NP220 protein.

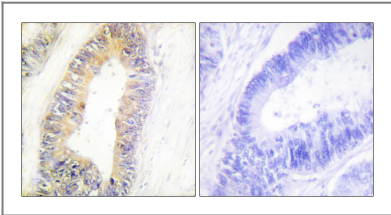
### Target Information

Gene name	ZNF638		
Protein Name	Zinc finger protein 638		
	Organism	Gene ID	UniProt ID
	Human	<a href="#">27332;</a>	<a href="#">Q14966;</a>
	Mouse		<a href="#">Q61464;</a>
Cellular Localization	Nucleus speckle .		
Tissue specificity	Cervix,Epithelium,Skin,Testis,Uterus,		
Function	Alternative products:Additional isoforms seem to exist,Disease:Isoform 5 is a tumor-associated antigen found in several cutaneous T-cell lymphoma (CTCL), and in particular in mycosis fungoides patients and in Sezary syndrome patients.,Function:Binds to cytidine clusters in double-stranded DNA.,PTM:Phosphorylated upon DNA damage, probably by ATM or ATR.,sequence Caution:Contaminating sequence. Potential poly-A sequence.,similarity:Contains 1 matrin-type zinc finger.,similarity:Contains 2 RRM (RNA recognition motif) domains.,subunit:Interacts with FHL2.,		

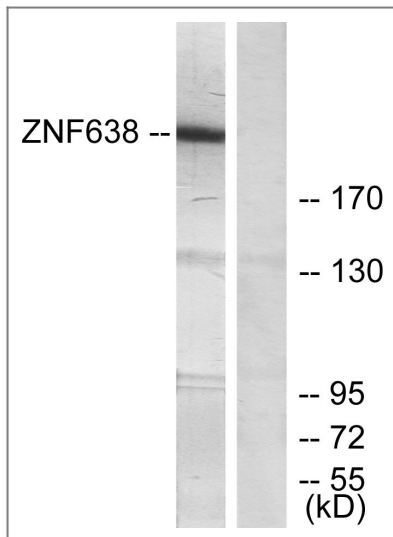
Validation Data



Western Blot analysis of various cells using NP220 Polyclonal Antibody



Immunohistochemistry analysis of paraffin-embedded human colon carcinoma tissue, using ZNF638 Antibody. The picture on the right is blocked with the synthesized peptide.



Western blot analysis of lysates from HepG2 cells, treated with serum 20% 15', using ZNF638 Antibody. The lane on the right is blocked with the synthesized peptide.

## Contact information

Orders: [order@immunoway.com](mailto:order@immunoway.com)  
Support: [tech@immunoway.com](mailto:tech@immunoway.com)  
Telephone: 877-594-3616 (Toll Free), 408-747-0185  
Website: <http://www.immunoway.com>  
Address: 2200 Ringwood Ave San Jose, CA 95131 USA



Please scan the QR code to access additional product information:  
**NP220 Rabbit pAb**

For Research Use Only. Not for Use in Diagnostic Procedures.

[Antibody](#) | [ELISA Kits](#) | [Protein](#) | [Reagents](#)