

## Nox3 Rabbit pAb

CatalogNo: YT3175

### Key Features

#### Host Species

- Rabbit

#### Reactivity

- Human, Mouse, Rat

#### Applications

- WB, IHC, IF, ELISA

#### MW

- 65kD (Observed)

#### Isotype

- IgG

### Recommended Dilution Ratios

**WB 1:500-1:2000**

**IHC 1:100-1:300**

**ELISA 1:40000**

**IF 1:50-200**

### Storage

#### Storage\*

-15°C to -25°C/1 year (Do not lower than -25°C)

#### Formulation

Liquid in PBS containing 50% glycerol, 0.5% BSA and 0.02% sodium azide.

### Basic Information

#### Clonality

Polyclonal

### Immunogen Information

#### Immunogen

The antiserum was produced against synthesized peptide derived from human NOX3. AA range: 287-336

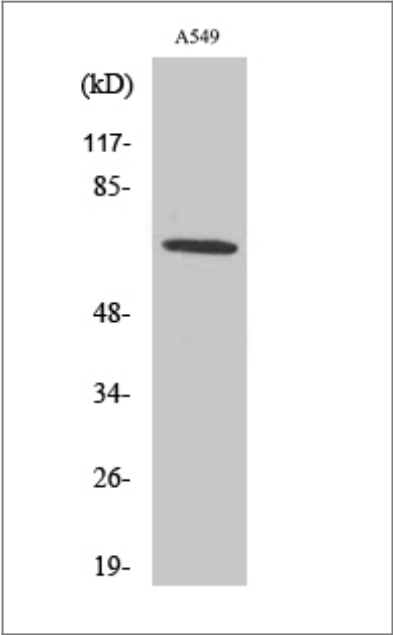
#### Specificity

Nox3 Polyclonal Antibody detects endogenous levels of Nox3 protein.

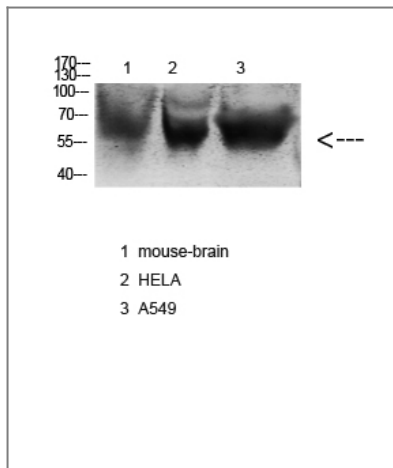
### Target Information

Gene name	NOX3		
Protein Name	NADPH oxidase 3		
	Organism	Gene ID	UniProt ID
	Human	<a href="#">50508</a> ;	<a href="#">Q9HBY0</a> ;
	Mouse	<a href="#">224480</a> ;	<a href="#">Q672J9</a> ;
	Rat	<a href="#">292279</a> ;	<a href="#">Q672K1</a> ;
Cellular Localization	Membrane ; Multi-pass membrane protein .		
Tissue specificity	Fetal kidney,		
Function	developmental stage:Expressed in fetal kidney and to a lower extent in liver, lung and spleen.,enzyme regulation:Activated by the ototoxic drug cisplatin (By similarity). Activated by NOXO1. Cooperatively activated by NCF1 and NCF2 or NOXA1 in a phorbol 12-myristate 13-acetate (PMA)-dependent manner. Inhibited by diphenyleneiodonium chloride.,Function:NADPH oxidase which constitutively produces superoxide upon formation of a complex with CYBA/p22phox. Plays a role in the biogenesis of otoconia/otolith, which are crystalline structures of the inner ear involved in the perception of gravity.,similarity:Contains 1 FAD-binding FR-type domain.,similarity:Contains 1 ferric oxidoreductase domain.,subunit:Interacts with and stabilizes CYBA/p22phox.,		

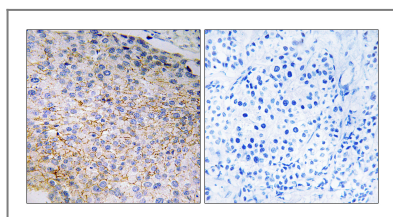
| Validation Data



Western Blot analysis of various cells using Nox3 Polyclonal Antibody



Western blot analysis of various cell Lysate, antibody was diluted at 1:1000. Secondary antibody(catalog#:RS0002) was diluted at 1:20000



Immunohistochemistry analysis of paraffin-embedded human breast carcinoma tissue, using NOX3 Antibody. The picture on the right is blocked with the synthesized peptide.

## Contact information

Orders: [order@immunoway.com](mailto:order@immunoway.com)  
 Support: [tech@immunoway.com](mailto:tech@immunoway.com)  
 Telephone: 877-594-3616 (Toll Free), 408-747-0185  
 Website: <http://www.immunoway.com>  
 Address: 2200 Ringwood Ave San Jose, CA 95131 USA



Please scan the QR code to access additional product information:  
**Nox3 Rabbit pAb**

For Research Use Only. Not for Use in Diagnostic Procedures.

[Antibody](#) | [ELISA Kits](#) | [Protein](#) | [Reagents](#)