

## NOC2L Rabbit pAb

CatalogNo: YT3160 **Orthogonal Validated** 

### Key Features

#### Host Species

- Rabbit

#### Reactivity

- Human, Mouse, Rat

#### Applications

- WB, IHC, IF, ELISA

#### MW

- 85kD (Observed)

#### Isotype

- IgG

### Storage

**Storage\*** -15°C to -25°C/1 year (Do not lower than -25°C)**Formulation** Liquid in PBS containing 50% glycerol, 0.5% BSA and 0.02% sodium azide.

### Recommended Dilution Ratios

**WB 1:500-1:2000****IHC 1:100-1:300****ELISA 1:40000****IF 1:50-200**

### Basic Information

**Clonality** Polyclonal

### Immunogen Information

**Immunogen** The antiserum was produced against synthesized peptide derived from human NOC2L. AA range: 602-651**Specificity** NOC2L Polyclonal Antibody detects endogenous levels of NOC2L protein.

### Target Information

**Gene name** NOC2L

**Protein Name** Nucleolar complex protein 2 homolog

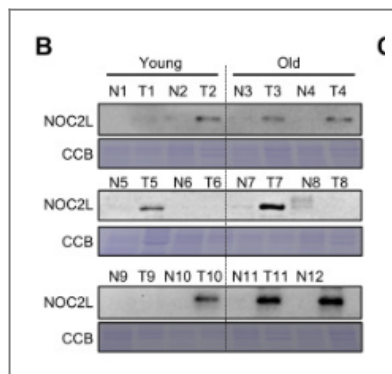
| Organism | Gene ID                | UniProt ID              |
|----------|------------------------|-------------------------|
| Human    | <a href="#">26155;</a> | <a href="#">Q9Y3T9;</a> |
| Mouse    |                        | <a href="#">Q9WV70;</a> |

**Cellular Localization** Nucleus, nucleoplasm. Nucleus, nucleolus. Translocates from the nucleoli to the nucleoplasm in presence of several stressors like ultraviolet irradiation and actinomycin-D. Predominantly detected in the nucleoli in non-mitotic cells. Predominantly detected in nucleoplasma in cells undergoing mitosis.

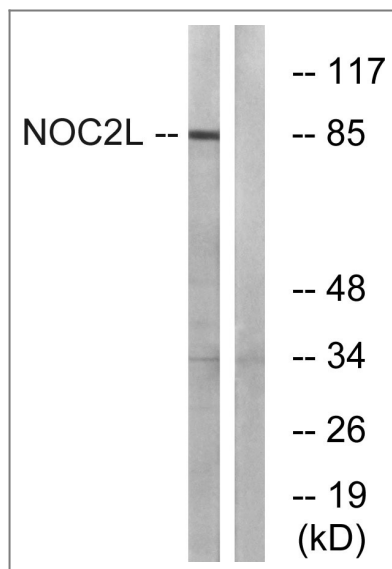
**Tissue specificity** Brain,Epithelium,Placenta,

**Function** similarity:Belongs to the NOC2 family.,

## Validation Data



Gong, Yanqiu, et al. "Age-Associated Proteomic Signatures and Potential Clinically Actionable Targets of Colorectal Cancer." *Molecular & Cellular Proteomics* (2021): 100115.



Western blot analysis of lysates from MCF-7 cells, using NOC2L Antibody. The lane on the right is blocked with the synthesized peptide.

## | Contact information

Orders: order@immunoway.com  
Support: tech@immunoway.com  
Telephone: 877-594-3616 (Toll Free), 408-747-0185  
Website: <http://www.immunoway.com>  
Address: 2200 Ringwood Ave San Jose, CA 95131 USA



Please scan the QR code  
to access additional  
product information:  
**NOC2L Rabbit pAb**

---

For Research Use Only. Not for Use in Diagnostic Procedures.

[Antibody](#) | [ELISA Kits](#) | [Protein](#) | [Reagents](#)