

NMDAε3 Rabbit pAb

CatalogNo: YT3153

Key Features

Host Species

- Rabbit

Reactivity

- Human, Mouse, Rat

Applications

- IHC, IF, ELISA

MW

- 134kD (Calculated)

Isotype

- IgG

Storage

Storage* -15°C to -25°C/1 year (Do not lower than -25°C)

Formulation Liquid in PBS containing 50% glycerol, 0.5% BSA and 0.02% sodium azide.

Recommended Dilution Ratios

IHC 1:100-1:300

ELISA 1:5000

IF 1:50-200

Basic Information

Clonality Polyclonal

Immunogen Information

Immunogen The antiserum was produced against synthesized peptide derived from human NMDAε3. AA range: 937-986

Specificity NMDAε3 Polyclonal Antibody detects endogenous levels of NMDAε3 protein.

Target Information

Gene name GRIN2C

Protein Name Glutamate [NMDA] receptor subunit epsilon-3

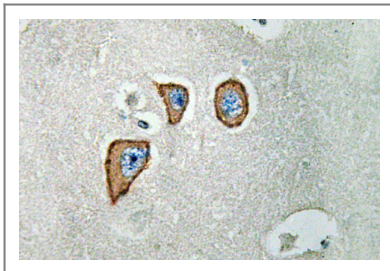
Organism	Gene ID	UniProt ID
Human	2905;	Q14957;
Mouse		Q01098;

Cellular Localization Cell membrane ; Multi-pass membrane protein . Cell junction, synapse, postsynaptic cell membrane; Multi-pass membrane protein.

Tissue specificity Mainly expressed in brain with predominant expression is in the cerebellum, also present in the hippocampus, amygdala, caudate nucleus, corpus callosum, subthalamic nuclei and thalamus. Detected in the heart, skeletal muscle and pancreas.

Function Function:NMDA receptor subtype of glutamate-gated ion channels with high calcium permeability and voltage-dependent sensitivity to magnesium. Mediated by glycine.,similarity:Belongs to the glutamate-gated ion channel (TC 1.A.10) family.,subunit:Interacts with PDZ domains of INADL and DLG4 (By similarity). Forms heteromeric channel of a zeta subunit (GRIN1), a epsilon subunit (GRIN2A, GRIN2B, GRIN2C or GRIN2D) and a third subunit (GRIN3A or GRIN3B).,tissue specificity:Mainly in brain with predominant expression is in the cerebellum, also present in the hippocampus, amygdala, caudate nucleus, corpus callosum, subthalamic nuclei and thalamus. Detected in the heart, skeletal muscle and pancreas.,

Validation Data



Immunohistochemistry analysis of NMDAε3 antibody in paraffin-embedded human brain tissue.

Contact information

Orders: order@immunoway.com
Support: tech@immunoway.com
Telephone: 877-594-3616 (Toll Free), 408-747-0185
Website: <http://www.immunoway.com>
Address: 2200 Ringwood Ave San Jose, CA 95131 USA



Please scan the QR code to access additional product information:
NMDAε3 Rabbit pAb

