

NM23-H2 Rabbit pAb

CatalogNo: YT3147

| Key Features

Host Species

- Rabbit

Reactivity

- Human, Mouse, Rat

Applications

- WB, ELISA

MW

- 23kD (Observed)

Isotype

- IgG

| Recommended Dilution Ratios

WB 1:500-1:2000

ELISA 1:5000

Not yet tested in other applications.

| Storage

Storage*

-15°C to -25°C/1 year (Do not lower than -25°C)

Formulation

Liquid in PBS containing 50% glycerol, 0.5% BSA and 0.02% sodium azide.

| Basic Information

Clonality

Polyclonal

| Immunogen Information

Immunogen

The antiserum was produced against synthesized peptide derived from human NM23. AA range: 91-140

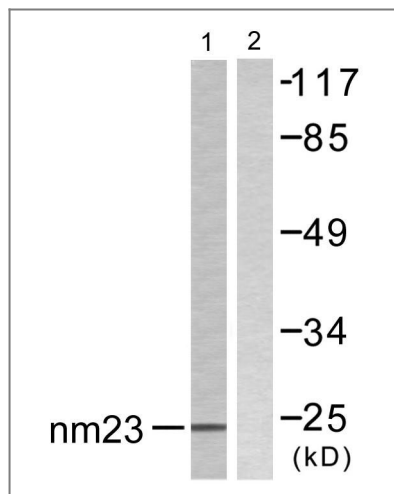
Specificity

NM23-H2 Polyclonal Antibody detects endogenous levels of NM23-H2 protein.

| Target Information

Gene name	NME2		
Protein Name	Nucleoside diphosphate kinase B		
	Organism	Gene ID	UniProt ID
	Human	4831 ;	P22392 ;
	Mouse	18103 ;	Q01768 ;
	Rat	83782 ;	P19804 ;
Cellular Localization	Cytoplasm . Cell projection, lamellipodium . Cell projection, ruffle . Colocalizes with ITGB1 and ITGB1BP1 at the edge or peripheral ruffles and lamellipodia during the early stages of cell spreading on fibronectin or collagen but not on vitronectin or laminin substrates. . ; [Isoform 1]: Cytoplasm . Cytoplasm, perinuclear region . Nucleus . ; [Isoform 3]: Cytoplasm . Cytoplasm, perinuclear region . Nucleus .		
Tissue specificity	[Isoform 1]: Ubiquitously expressed. . ; [Isoform 3]: Ubiquitously expressed.		
Function	Catalytic activity:ATP + nucleoside diphosphate = ADP + nucleoside triphosphate.,cofactor:Magnesium.,Disease:This protein is found in reduced amount in tumor cells of high metastatic potential.,Disease:This protein is found in reduced amount in tumor cells of high metastatic potential. Somatic mutations of NME1 are found in neuroblastoma. Increased NME1 in neuroblastoma is correlated with features of the disease that are associated with aggressive tumors. May therefore have distinct if not opposite roles in different tumors.,enzyme regulation:Autophosphorylation at His-118 increases serine/threonine protein kinase activity of the enzyme. Interaction with the SET complex inhibits exonuclease activity.,Function:Major role in the synthesis of nucleoside triphosphates other than ATP. Negatively regulates Rho activity by interacting with AKAP13/LBC. Acts as a transcriptional activator of the c-Myc gene; binds DNA non-specifically (PubMed:8392752).,Function:Major role in the synthesis of nucleoside triphosphates other than ATP. Possesses nucleoside-diphosphate kinase, serine/threonine-specific protein kinase, geranyl and farnesyl pyrophosphate kinase, histidine protein kinase and 3'-5' exonuclease activities. Involved in cell proliferation, differentiation and development, signal transduction, G protein-coupled receptor endocytosis, and gene expression. Required for neural development including neural patterning and cell fate determination. Has tumor metastasis-suppressive capacity.,PTM:The N-terminus is blocked.,similarity:Belongs to the NDK family.,subcellular location:Cell-cycle dependent nuclear localization which can be induced by interaction with Epstein-barr viral proteins or by degradation of the SET complex by Gzma.,subcellular location:Isoform 2 is mainly cytoplasmic and isoform 1 and isoform 2 are excluded from the nucleolus.,subunit:Hexamer of two different chains: A and B (A6, A5B, A4B2, A3B3, A2B4, AB5, B6). Interacts with CAPN8 (By similarity). Interacts with AKAP13.,subunit:Hexamer of two different chains: A and B (A6, A5B, A4B2, A3B3, A2B4, AB5, B6). Interacts with SET and PRUNE.,tissue specificity:Isoform 1 is expressed in heart, brain, placenta, lung, liver, skeletal muscle, pancreas, spleen and thymus. Expressed in lung carcinoma cell lines but not in normal lung tissues. Isoform 2 is ubiquitously expressed and its expression is also related to tumor differentiation. Isoform 3 is ubiquitously expressed.,tissue specificity:Ubiquitously expressed.,		

| Validation Data



Western blot analysis of lysates from K562 cells, using NM23 Antibody. The lane on the right is blocked with the synthesized peptide.

Contact information

Orders: order@immunoway.com
 Support: tech@immunoway.com
 Telephone: 877-594-3616 (Toll Free), 408-747-0185
 Website: <http://www.immunoway.com>
 Address: 2200 Ringwood Ave San Jose, CA 95131 USA



Please scan the QR code to access additional product information:
NM23-H2 Rabbit pAb

For Research Use Only. Not for Use in Diagnostic Procedures.

[Antibody](#) | [ELISA Kits](#) | [Protein](#) | [Reagents](#)