

Nkx-2.4 Rabbit pAb

CatalogNo: YT3138

Key Features

Host Species

- Rabbit

Reactivity

- Human, Mouse

Applications

- WB, ELISA

MW

- 40kD (Observed)

Isotype

- IgG

Recommended Dilution Ratios

WB 1:500-1:2000

ELISA 1:10000

Not yet tested in other applications.

Storage

Storage* -15°C to -25°C/1 year (Do not lower than -25°C)

Formulation Liquid in PBS containing 50% glycerol, 0.5% BSA and 0.02% sodium azide.

Basic Information

Clonality Polyclonal

Immunogen Information

Immunogen The antiserum was produced against synthesized peptide derived from human NKX24. AA range:10-59

Specificity Nkx-2.4 Polyclonal Antibody detects endogenous levels of Nkx-2.4 protein.

Target Information

Gene name NKX2-4

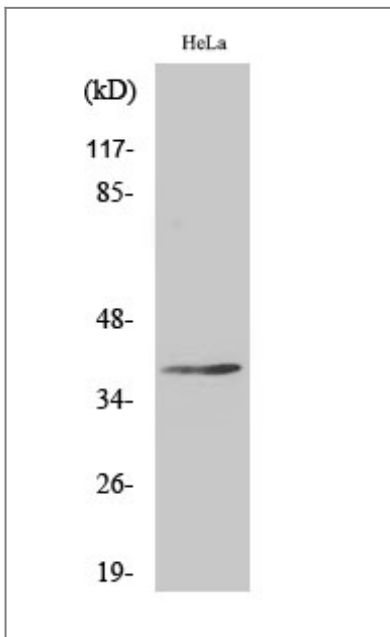
Protein Name Homeobox protein Nkx-2.4

Organism	Gene ID	UniProt ID
Human	644524;	Q9H2Z4;
Mouse		Q9EQM3;

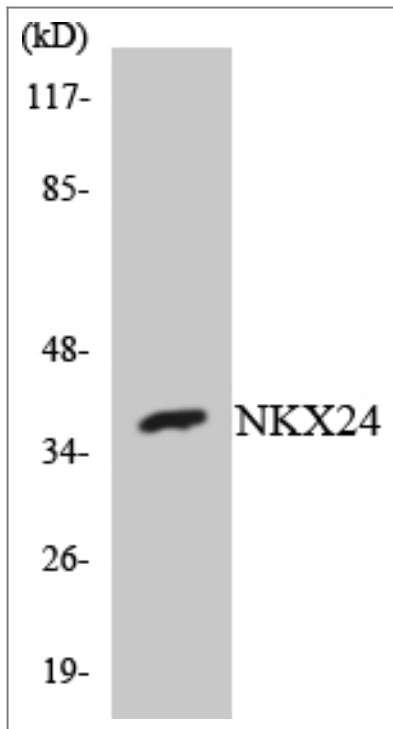
Cellular Localization Nucleus .

Function Function:Probable transcription factor.,similarity:Belongs to the NK-2 homeobox family.,similarity:Contains 1 homeobox DNA-binding domain.,

Validation Data



Western Blot analysis of various cells using Nkx-2.4 Polyclonal Antibody cells nucleus extracted by Minute TM Cytoplasmic and Nuclear Fractionation kit (SC-003, Invent biotech, MN, USA).



Western blot analysis of the lysates from K562 cells using NKX24 antibody.

Contact information

Orders: order@immunoway.com
Support: tech@immunoway.com
Telephone: 877-594-3616 (Toll Free), 408-747-0185
Website: <http://www.immunoway.com>
Address: 2200 Ringwood Ave San Jose, CA 95131 USA



Please scan the QR code to access additional product information:
Nkx-2.4 Rabbit pAb

For Research Use Only. Not for Use in Diagnostic Procedures.

[Antibody](#) | [ELISA Kits](#) | [Protein](#) | [Reagents](#)