

NIPP1 Rabbit pAb

CatalogNo: YT3130

Orthogonal Validated 

Key Features

Host Species

- Rabbit

Reactivity

- Human, Mouse, Rat

Applications

- WB, ELISA

MW

- 40kD (Observed)

Isotype

- IgG

Recommended Dilution Ratios

WB 1:500-1:2000**ELISA 1:20000****Not yet tested in other applications.**

Storage

Storage*

-15°C to -25°C/1 year (Do not lower than -25°C)

Formulation

Liquid in PBS containing 50% glycerol, 0.5% BSA and 0.02% sodium azide.

Basic Information

Clonality

Polyclonal

Immunogen Information

Immunogen

The antiserum was produced against synthesized peptide derived from human PPP1R8. AA range: 196-245

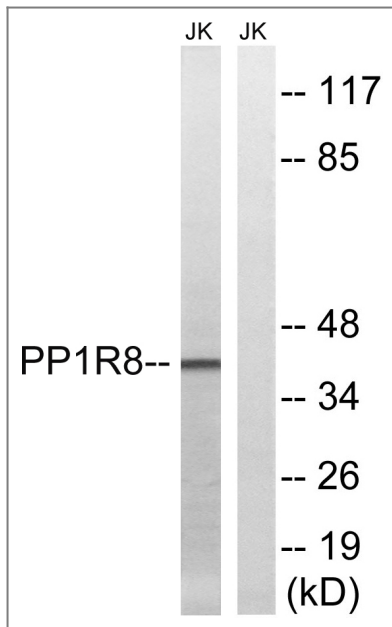
Specificity

NIPP1 Polyclonal Antibody detects endogenous levels of NIPP1 protein.

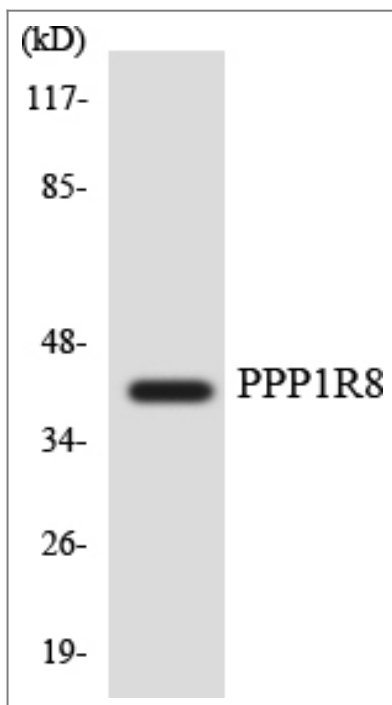
Target Information

Gene name	PPP1R8		
Protein Name	Nuclear inhibitor of protein phosphatase 1		
	Organism	Gene ID	UniProt ID
	Human	5511 ;	Q12972 ;
	Mouse	100336 ;	Q8R3G1 ;
Cellular Localization	Nucleus. Nucleus speckle. Primarily, but not exclusively, nuclear.; [Isoform Gamma]: Cytoplasm. Found mainly in the cytoplasm.		
Tissue specificity	Ubiquitously expressed, with highest levels in heart and skeletal muscle, followed by brain, placenta, lung, liver and pancreas. Less abundant in kidney. The concentration and ratio between isoforms is cell-type dependent. Isoform Alpha (>90%) and isoform Beta were found in brain, heart and kidney. Isoform Gamma is mainly found in B-cells and T-lymphocytes, and has been found in 293 embryonic kidney cells.		
Function	cofactor:Magnesium. Endoribonuclease function is magnesium-dependent.,Domain:Has a basic N- and C-terminal and an acidic central domain.,Function:Inhibitor subunit of the major nuclear protein phosphatase-1 (PP-1). It has RNA-binding activity but does not cleave RNA and may target PP-1 to RNA-associated substrates. May also be involved in pre-mRNA splicing. Binds DNA and might act as a transcriptional repressor. Seems to be required for cell proliferation.,Function:Isoform Gamma is a site-specific single-strand endoribonuclease that cleaves single strand RNA 3' to purines and pyrimidines in A+U-rich regions. It generates 5'-phosphate termini at the site of cleavage. This isoform does not inhibit PP-1. May be implicated in mRNA splicing.,miscellaneous:A synthetic peptide, NIPP-1(330-351), is able to inhibit PP-1. Phosphorylation of Tyr-335 reduces PP-1 inhibition, whereas phosphorylation of Thr-346 or Ser-348 has no effect.,PTM:May be inactivated by phosphorylation on Ser-199 or Ser-204 (By similarity). Phosphorylated by Lyn in vitro on Tyr-264, and also on Tyr-335 in the presence of RNA.,similarity:Contains 1 FHA domain.,subcellular location:Found mainly in the cytoplasm.,subcellular location:Primarily, but not exclusively, nuclear.,subunit:Interacts with phosphorylated CDC5L, SF3B1 and MELK. Interacts with EED, in a nucleic acid-stimulated manner. Part of a complex consisting of PPP1R8, EED, HDAC2 and PP-1. Part of the spliceosome.,tissue specificity:Ubiquitously expressed, with highest levels in heart and skeletal muscle, followed by brain, placenta, lung, liver and pancreas. Less abundant in kidney. The concentration and ratio between isoforms is cell-type dependent. Isoform Alpha (>90%) and isoform Beta were found in brain, heart and kidney. Isoform Gamma is mainly found in B-cells and T-lymphocytes, and has been found in 293 embryonic kidney cells.,		

| Validation Data



Western blot analysis of lysates from Jurkat cells, using PPP1R8 Antibody. The lane on the right is blocked with the synthesized peptide.



Western blot analysis of the lysates from HUVEC cells using PPP1R8 antibody.

Contact information

Orders: order@immunoway.com
 Support: tech@immunoway.com
 Telephone: 877-594-3616 (Toll Free), 408-747-0185
 Website: <http://www.immunoway.com>
 Address: 2200 Ringwood Ave San Jose, CA 95131 USA



Please scan the QR code to access additional product information:
NIPP1 Rabbit pAb