

NIM1 Rabbit pAb

CatalogNo: YT3128

| Key Features

Host Species

- Rabbit

Reactivity

- Human, Mouse

Applications

- WB, ELISA

MW

- 50kD (Calculated)

Isotype

- IgG

| Recommended Dilution Ratios

WB 1:500-1:2000

ELISA 1:10000

Not yet tested in other applications.

| Storage

Storage*

-15°C to -25°C/1 year (Do not lower than -25°C)

Formulation

Liquid in PBS containing 50% glycerol, 0.5% BSA and 0.02% sodium azide.

| Basic Information

Clonality

Polyclonal

| Immunogen Information

Immunogen

The antiserum was produced against synthesized peptide derived from human NIM1. AA range: 347-396

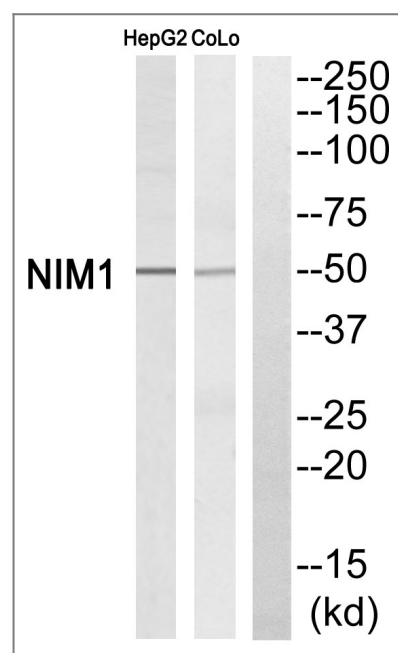
Specificity

NIM1 Polyclonal Antibody detects endogenous levels of NIM1 protein.

| Target Information

Gene name	NIM1		
Protein Name	Serine/threonine-protein kinase NIM1		
	Organism	Gene ID	UniProt ID
	Human	167359 ;	Q8IY84 ;
	Mouse	245269 ;	Q8BHI9 ;
Cellular Localization	nucleus,cytoplasm,integral component of membrane,		
Tissue specificity	Brain,		
Function	Catalytic activity:ATP + a protein = ADP + a phosphoprotein.,cofactor:Magnesium.,enzyme regulation:Activated by phosphorylation at Thr-229, probably by autophosphorylation.,similarity:Belongs to the protein kinase superfamily. CAMK Ser/Thr protein kinase family.,similarity:Contains 1 protein kinase domain.,		

Validation Data



Western blot analysis of NIM1 Antibody. The lane on the right is blocked with the NIM1 peptide.

Contact information

Orders: order@immunoway.com
 Support: tech@immunoway.com
 Telephone: 877-594-3616 (Toll Free), 408-747-0185
 Website: <http://www.immunoway.com>
 Address: 2200 Ringwood Ave San Jose, CA 95131 USA



Please scan the QR code to access additional product information:
NIM1 Rabbit pAb

