

## Nicalin Rabbit pAb

CatalogNo: YT3124

### Key Features

#### Host Species

- Rabbit

#### Reactivity

- Human, Mouse, Rat

#### Applications

- WB, IHC, IF, ELISA

#### MW

- 63kD (Observed)

#### Isotype

- IgG

### Storage

**Storage\*** -15°C to -25°C/1 year (Do not lower than -25°C)

**Formulation** Liquid in PBS containing 50% glycerol, 0.5% BSA and 0.02% sodium azide.

### Recommended Dilution Ratios

**WB 1:500-1:2000**

**IHC 1:100-1:300**

**ELISA 1:40000**

**IF 1:50-200**

### Basic Information

**Clonality** Polyclonal

### Immunogen Information

**Immunogen** The antiserum was produced against synthesized peptide derived from human NCLN. AA range:474-523

**Specificity** Nicalin Polyclonal Antibody detects endogenous levels of Nicalin protein.

### Target Information

**Gene name** NCLN

**Protein Name** Nicalin

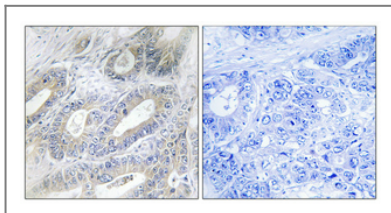
Organism	Gene ID	UniProt ID
Human	<a href="#">56926;</a>	<a href="#">Q969V3;</a>
Mouse	<a href="#">103425;</a>	<a href="#">Q8VCM8;</a>
Rat	<a href="#">314648;</a>	<a href="#">Q5XIA1;</a>

**Cellular Localization** Endoplasmic reticulum membrane ; Single-pass membrane protein .

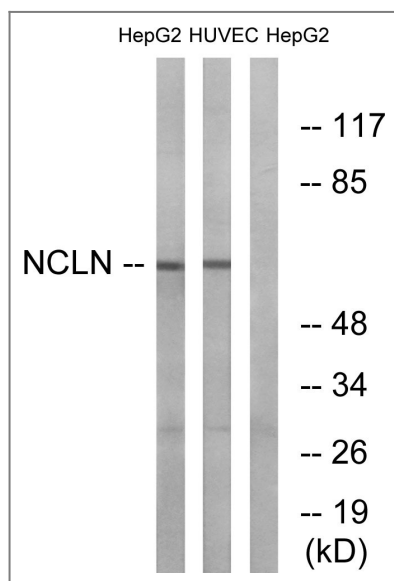
**Tissue specificity** Highly expressed in pancreas and skeletal muscle and, at lower levels, in heart.

**Function** Function:May antagonize Nodal signaling and subsequent organization of axial structures during mesodermal patterning.,similarity:Belongs to the nicastrin family.,subunit:Interacts with NOMO2. Due to the strong similarity between NOMO1, NOMO2 and NOMO3, it probably also interacts with NOMO1 and NOMO3. Participates in a large protein complex, which is not related to the gamma-secretase complex.,tissue specificity:Highly expressed in pancreas and skeletal muscle and, at lower levels, in heart.,

## Validation Data



Immunohistochemical analysis of paraffin-embedded Human colon cancer. Antibody was diluted at 1:100(4° overnight). High-pressure and temperature Tris-EDTA,pH8.0 was used for antigen retrieval. Negative control (right) obtained from antibody was pre-absorbed by immunogen peptide.



Western blot analysis of lysates from HepG2 and HUVEC cells, using NCLN Antibody. The lane on the right is blocked with the synthesized peptide.

## | Contact information

Orders: order@immunoway.com  
Support: tech@immunoway.com  
Telephone: 877-594-3616 (Toll Free), 408-747-0185  
Website: <http://www.immunoway.com>  
Address: 2200 Ringwood Ave San Jose, CA 95131 USA



Please scan the QR code  
to access additional  
product information:  
**Nicalin Rabbit pAb**

---

For Research Use Only. Not for Use in Diagnostic Procedures.

[Antibody](#) | [ELISA Kits](#) | [Protein](#) | [Reagents](#)