

## NHE-9 Rabbit pAb

CatalogNo: YT3120

### Key Features

#### Host Species

- Rabbit

#### Reactivity

- Human, Mouse

#### Applications

- WB, ELISA

#### MW

- 65kD (Observed)

#### Isotype

- IgG

### Recommended Dilution Ratios

**WB 1:500-1:2000**

**ELISA 1:40000**

**Not yet tested in other applications.**

### Storage

#### Storage\*

-15°C to -25°C/1 year (Do not lower than -25°C)

#### Formulation

Liquid in PBS containing 50% glycerol, 0.5% BSA and 0.02% sodium azide.

### Basic Information

#### Clonality

Polyclonal

### Immunogen Information

#### Immunogen

The antiserum was produced against synthesized peptide derived from human SLC9A9. AA range: 171-220

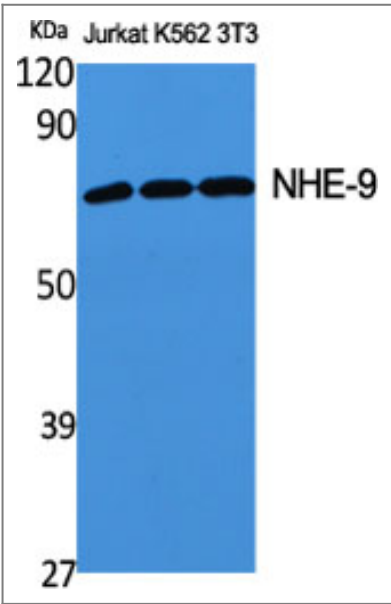
#### Specificity

NHE-9 Polyclonal Antibody detects endogenous levels of NHE-9 protein.

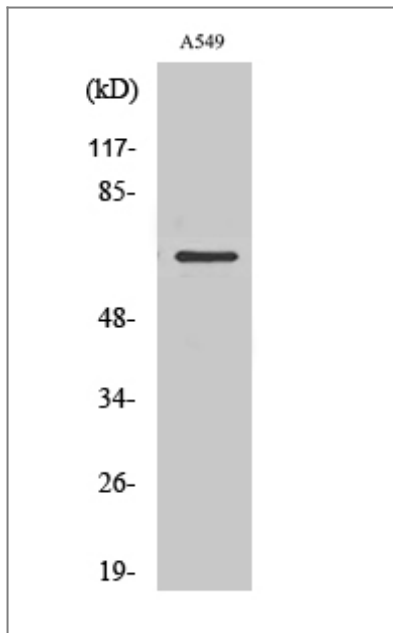
### Target Information

Gene name	SLC9A9		
Protein Name	Sodium/hydrogen exchanger 9		
	Organism	Gene ID	UniProt ID
	Human	<a href="#">285195</a> ;	<a href="#">Q8IVB4</a> ;
	Mouse	<a href="#">331004</a> ;	<a href="#">Q8BZ00</a> ;
Cellular Localization	Late endosome membrane ; Multi-pass membrane protein .		
Tissue specificity	Ubiquitously expressed in all tissues tested. Expressed at highest levels in heart and skeletal muscle, followed by placenta, kidney, and liver. Expressed in the brain, in the medulla and spinal cord.		
Function	Disease:A chromosomal aberration involving SLC9A9 may be a cause of early-onset behavioral/developmental disorder with features of attention deficit-hyperactivity disorder and intellectual disability (ADHD) [MIM:143465]. Inversion inv(3)(p14;q21). The inversion disrupts SLC9A9 and DOCK3.,Function:May act in electroneutral exchange of protons for Na(+) across membranes. Involved in the effusion of Golgi luminal H(+) in exchange for cytosolic cations. Involved in organelle ion homeostasis by contributing to the maintainance of the unique acidic pH values of the Golgi and post-Golgi compartments in the cell.,similarity:Belongs to the monovalent cation:proton antiporter 1 (CPA1) transporter (TC 2.A.36) family.,tissue specificity:Ubiquitously expressed in all tissues tested. Expressed at highest levels in heart and skeletal muscle, followed by placenta, kidney, and liver. Expressed in the brain, in the medulla and spinal cord.,		

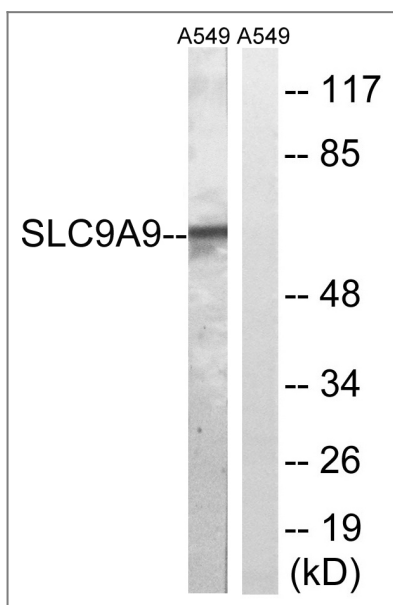
Validation Data



Western Blot analysis of various cells using NHE-9 Polyclonal Antibody



Western Blot analysis of RAW264.7 cells using NHE-9 Polyclonal Antibody



Western blot analysis of lysates from A549 cells, using SLC9A9 Antibody. The lane on the right is blocked with the synthesized peptide.

## Contact information

Orders: [order@immunoway.com](mailto:order@immunoway.com)  
 Support: [tech@immunoway.com](mailto:tech@immunoway.com)  
 Telephone: 877-594-3616 (Toll Free), 408-747-0185  
 Website: <http://www.immunoway.com>  
 Address: 2200 Ringwood Ave San Jose, CA 95131 USA



Please scan the QR code to access additional product information:  
**NHE-9 Rabbit pAb**