

## NHE-8 Rabbit pAb

CatalogNo: YT3119

### Key Features

#### Host Species

- Rabbit

#### Reactivity

- Human, Mouse, Rat

#### Applications

- WB, IHC, IF, ELISA

#### MW

- 65kD (Observed)

#### Isotype

- IgG

### Recommended Dilution Ratios

**WB 1:500-1:2000**

**IHC:1:50-300**

**ELISA 1:20000**

**IF 1:50-200**

### Storage

#### Storage\*

-15°C to -25°C/1 year (Do not lower than -25°C)

#### Formulation

Liquid in PBS containing 50% glycerol, 0.5% BSA and 0.02% sodium azide.

### Basic Information

#### Clonality

Polyclonal

### Immunogen Information

#### Immunogen

The antiserum was produced against synthesized peptide derived from human SLC9A8. AA range:451-500

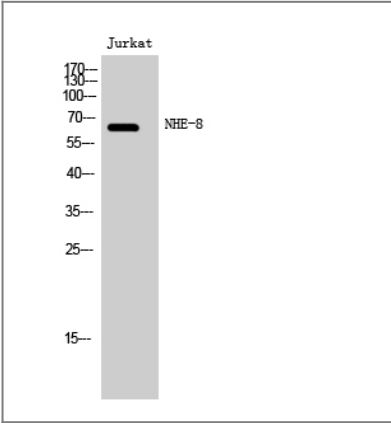
#### Specificity

NHE-8 Polyclonal Antibody detects endogenous levels of NHE-8 protein.

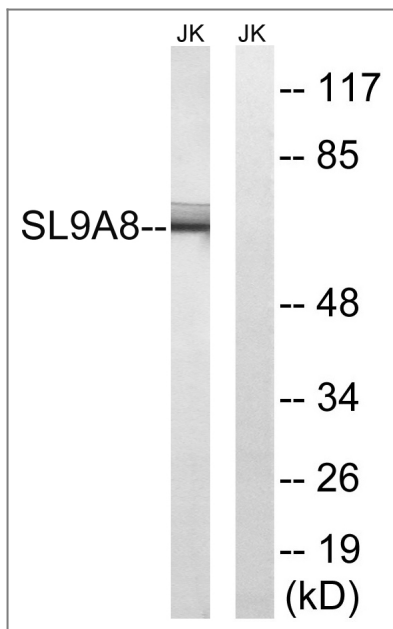
### Target Information

Gene name	SLC9A8		
Protein Name	Sodium/hydrogen exchanger 8		
	Organism	Gene ID	UniProt ID
	Human	<a href="#">23315;</a>	<a href="#">Q9Y2E8;</a>
	Mouse	<a href="#">77031;</a>	<a href="#">Q8R4D1;</a>
	Rat	<a href="#">311651;</a>	<a href="#">Q4L208;</a>
Cellular Localization	Golgi apparatus membrane ; Multi-pass membrane protein .		
Tissue specificity	Ubiquitous. Strongly expressed in skeletal muscle and kidney.		
Function	Function:Involved in pH regulation to eliminate acids generated by active metabolism or to counter adverse environmental conditions. Major proton extruding system driven by the inward sodium ion chemical gradient. Plays an important role in signal transduction.,similarity:Belongs to the monovalent cation:proton antiporter 1 (CPA1) transporter (TC 2.A.36) family.,tissue specificity:Ubiquitous. Strongly expressed in skeletal muscle and kidney.,		

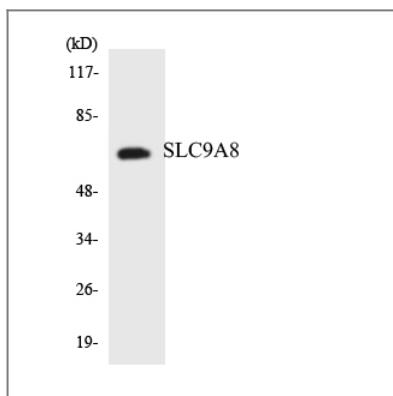
| Validation Data



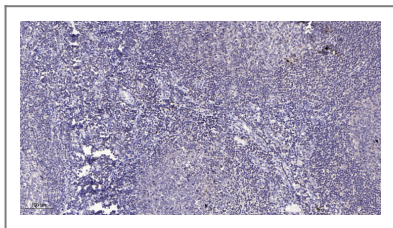
Western Blot analysis of Jurkat cells using NHE-8 Polyclonal Antibody



Western blot analysis of lysates from Jurkat cells, using SLC9A8 Antibody. The lane on the right is blocked with the synthesized peptide.



Western blot analysis of the lysates from HeLa cells using SLC9A8 antibody.



Immunohistochemical analysis of paraffin-embedded human tonsil. 1, Antibody was diluted at 1:200(4° overnight). 2, Tris-EDTA,pH9.0 was used for antigen retrieval. 3,Secondary antibody was diluted at 1:200(room temperature, 30min).

## Contact information

Orders: order@immunoway.com  
 Support: tech@immunoway.com  
 Telephone: 877-594-3616 (Toll Free), 408-747-0185  
 Website: <http://www.immunoway.com>  
 Address: 2200 Ringwood Ave San Jose, CA 95131 USA



Please scan the QR code to access additional product information:  
**NHE-8 Rabbit pAb**