

## NF-YC Rabbit pAb

CatalogNo: YT3092

### Key Features

**Host Species**

- Rabbit

**Reactivity**

- Human, Mouse, Rat

**Applications**

- WB, IHC, IF, ELISA

**MW**

- 50kD (Observed)

**Isotype**

- IgG

### Recommended Dilution Ratios

**WB 1:500-1:2000****IHC 1:100-1:300****ELISA 1:10000****IF 1:50-200**

### Storage

**Storage\***

-15°C to -25°C/1 year (Do not lower than -25°C)

**Formulation**

Liquid in PBS containing 50% glycerol, 0.5% BSA and 0.02% sodium azide.

### Basic Information

**Clonality**

Polyclonal

### Immunogen Information

**Immunogen**

The antiserum was produced against synthesized peptide derived from human NFYC. AA range: 1-50

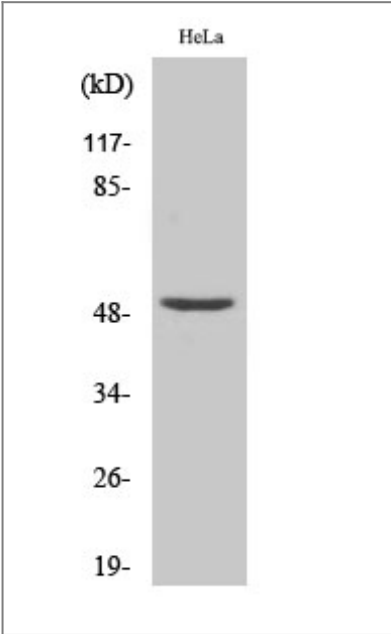
**Specificity**

NF-YC Polyclonal Antibody detects endogenous levels of NF-YC protein.

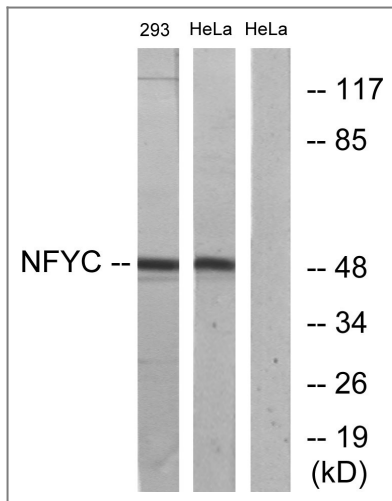
### Target Information

Gene name	NFYC		
Protein Name	Nuclear transcription factor Y subunit gamma		
	Organism	Gene ID	UniProt ID
	Human	<a href="#">4802</a> ;	<a href="#">Q13952</a> ;
	Mouse	<a href="#">18046</a> ;	<a href="#">P70353</a> ;
	Rat	<a href="#">25337</a> ;	<a href="#">Q62725</a> ;
Cellular Localization	Nucleus.		
Tissue specificity	Brain,Lymph node,Synovial membrane tissue,		
Function	Function:Stimulates the transcription of various genes by recognizing and binding to a CCAAT motif in promoters, for example in type 1 collagen, albumin and beta-actin genes.,similarity:Belongs to the NFYC/HAP5 subunit family.,subunit:Heterotrimeric transcription factor composed of three components, NF-YA, NF-YB and NF-YC. NF-YB and NF-YC must interact and dimerize for NF-YA association and DNA binding.,		

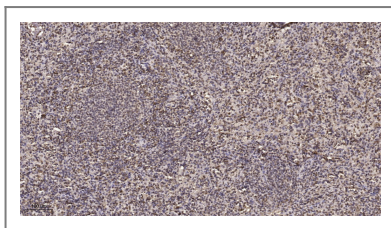
| Validation Data



Western Blot analysis of 293 cells using NF-YC Polyclonal Antibody diluted at 1:1000



Western blot analysis of lysates from HeLa and 293 cells, using NFYC Antibody. The lane on the right is blocked with the synthesized peptide.



Immunohistochemical analysis of paraffin-embedded human spleen. 1, Tris-EDTA, pH 9.0 was used for antigen retrieval. 2 Antibody was diluted at 1:200 (4° overnight). 3, Secondary antibody was diluted at 1:200 (room temperature, 45min).

## Contact information

Orders: [order@immunoway.com](mailto:order@immunoway.com)  
 Support: [tech@immunoway.com](mailto:tech@immunoway.com)  
 Telephone: 877-594-3616 (Toll Free), 408-747-0185  
 Website: <http://www.immunoway.com>  
 Address: 2200 Ringwood Ave San Jose, CA 95131 USA



Please scan the QR code to access additional product information:  
**NF-YC Rabbit pAb**

For Research Use Only. Not for Use in Diagnostic Procedures.

[Antibody](#) | [ELISA Kits](#) | [Protein](#) | [Reagents](#)