

## NFRκB Rabbit pAb

CatalogNo: YT3089

### | Key Features

#### Host Species

- Rabbit

#### Reactivity

- Human, Mouse, Monkey

#### Applications

- WB, ELISA, IHC

#### MW

- 110kD (Observed)

#### Isotype

- IgG

### | Recommended Dilution Ratios

**WB 1:500-2000**

**IHC 1:50-300**

**ELISA 1:2000-20000**

### | Storage

**Storage\*** -15°C to -25°C/1 year (Do not lower than -25°C)

**Formulation** Liquid in PBS containing 50% glycerol, 0.5% BSA and 0.02% sodium azide.

### | Basic Information

**Clonality** Polyclonal

### | Immunogen Information

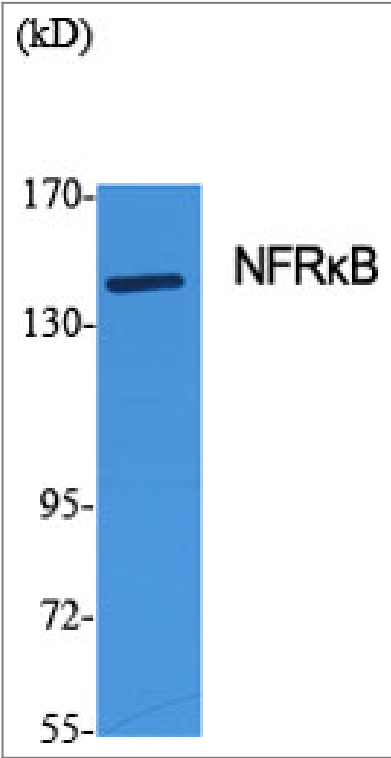
**Immunogen** The antiserum was produced against synthesized peptide derived from human NFRKB. AA range: 463-512

**Specificity** NFRκB Polyclonal Antibody detects endogenous levels of NFRκB protein.

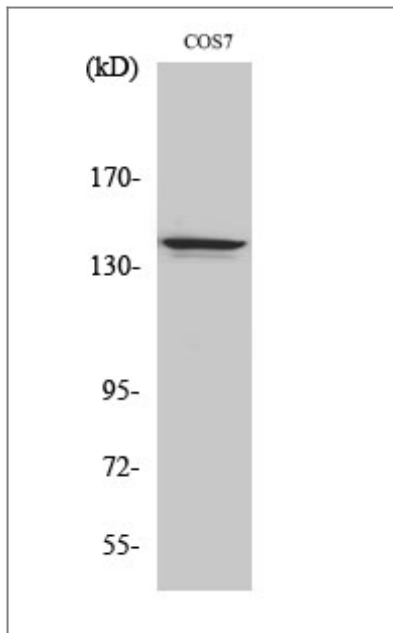
### | Target Information

|                       |  |                         |                         |
|-----------------------|--|-------------------------|-------------------------|
| Gene name             | NFRKB  |                         |                         |
| Protein Name          | Nuclear factor related to kappa-B-binding protein  |                         |                         |
|                       | Organism   | Gene ID                 | UniProt ID              |
|                       | Human  | <a href="#">4798;</a>   | <a href="#">Q6P4R8;</a> |
|                       | Mouse  | <a href="#">235134;</a> | <a href="#">Q6PIJ4;</a> |
| Cellular Localization | Nucleus .  |                         |                         |
| Tissue specificity    | Expressed in thymus, brain, testes, spleen and liver.  |                         |                         |
| Function              | Function:Binds to the DNA consensus sequence 5'-GGGGAATCTCC-3'.PTM:Phosphorylated upon DNA damage, probably by ATM or ATR.,subunit:Component of the chromatin-remodeling INO80 complex, at least composed of ACTL6A, ACTR5, ACTR8, RVBL1, RVBL2, INO80, INO80B, INO80C, INO80D and INO80E.,tissue specificity:Expressed in thymus, brain, testes, spleen and liver., |                         |                         |

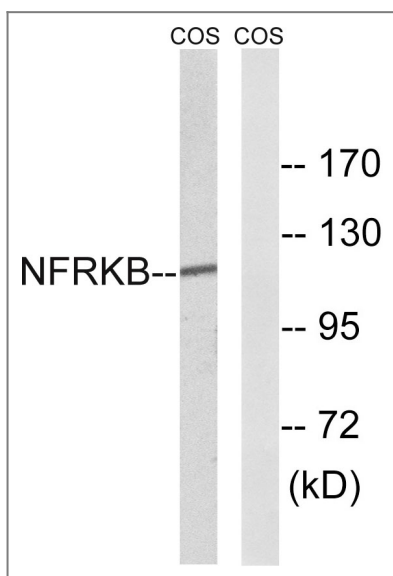
Validation Data



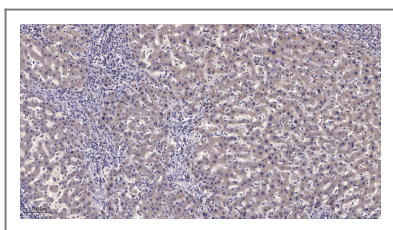
Western Blot analysis of various cells using NFRkB Polyclonal Antibody diluted at 1:500 cells nucleus extracted by Minute TM Cytoplasmic and Nuclear Fractionation kit (SC-003,Inventbiotech,MN,USA).



Western Blot analysis of COS7 cells using NFRκB Polyclonal Antibody diluted at 1:500 cells nucleus extracted by Minute TM Cytoplasmic and Nuclear Fractionation kit (SC-003, Invent biotech, MN, USA).



Western blot analysis of lysates from COS7 cells, using NFRκB Antibody. The lane on the right is blocked with the synthesized peptide.



Immunohistochemical analysis of paraffin-embedded human liver cancer. 1, Antibody was diluted at 1:200 (4° overnight). 2, Tris-EDTA, pH 9.0 was used for antigen retrieval. 3, Secondary antibody was diluted at 1:200 (room temperature, 45 min).

## Contact information

Orders: [order@immunoway.com](mailto:order@immunoway.com)  
 Support: [tech@immunoway.com](mailto:tech@immunoway.com)  
 Telephone: 877-594-3616 (Toll Free), 408-747-0185  
 Website: <http://www.immunoway.com>  
 Address: 2200 Ringwood Ave San Jose, CA 95131 USA



Please scan the QR code to access additional product information:  
**NFRκB Rabbit pAb**

