

NF-1 Rabbit pAb

CatalogNo: YT3078

Key Features

Host Species

- Rabbit

Reactivity

- Human, Mouse, Rat

Applications

- WB, IHC, IF, ELISA

MW

- 55kD (Observed)

Isotype

- IgG

Recommended Dilution Ratios

WB 1:500-1:2000

IHC 1:100-1:300

ELISA 1:20000

IF 1:50-200

Storage

Storage*

-15°C to -25°C/1 year (Do not lower than -25°C)

Formulation

Liquid in PBS containing 50% glycerol, 0.5% BSA and 0.02% sodium azide.

Basic Information

Clonality

Polyclonal

Immunogen Information

Immunogen

The antiserum was produced against synthesized peptide derived from human Nuclear Factor 1. AA range: 11-60

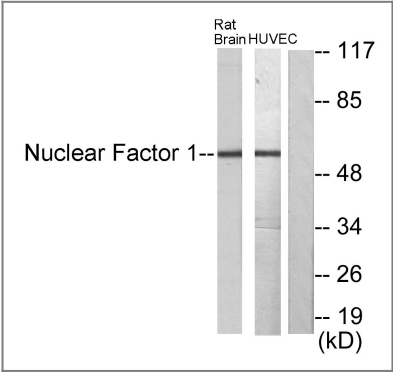
Specificity

NF-1 Polyclonal Antibody detects endogenous levels of NF-1 protein.

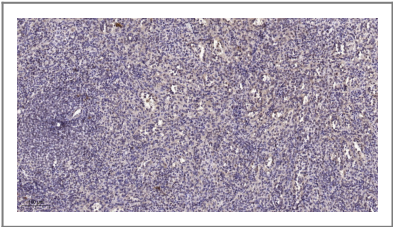
Target Information

Gene name	NFIA		
Protein Name	Nuclear factor 1 A-type		
	Organism	Gene ID	UniProt ID
	Human	4774 ; 4781 ; 4782 ; 4784 ;	Q12857 ; O00712 ; P08651 ; Q14938 ;
	Mouse	18027 ; 18028 ; 18029 ; 18032 ;	
	Rat	25492 ;	P09414 ;
Cellular Localization	Nucleus.		
Tissue specificity	Brain,Epithelium,Skeletal muscle,Testis,		
Function	Function:Recognizes and binds the palindromic sequence 5'-TTGGCNNNNNGCCAA-3' present in viral and cellular promoters and in the origin of replication of adenovirus type 2. These proteins are individually capable of activating transcription and replication.,PTM:Phosphorylated upon DNA damage, probably by ATM or ATR.,similarity:Belongs to the CTF/NF-I family.,similarity:Contains 1 CTF/NF-I DNA-binding domain.,subunit:Binds DNA as a homodimer.,		

| Validation Data



Western blot analysis of lysates from rat brain and HUVEC cells, using Nuclear Factor 1 Antibody. The lane on the right is blocked with the synthesized peptide.



Immunohistochemical analysis of paraffin-embedded human spleen. 1, Tris-EDTA,pH9.0 was used for antigen retrieval. 2 Antibody was diluted at 1:200(4° overnight.3,Secondary antibody was diluted at 1:200(room temperature, 45min).

| Contact information

Orders: order@immunoway.com
Support: tech@immunoway.com
Telephone: 877-594-3616 (Toll Free), 408-747-0185
Website: <http://www.immunoway.com>
Address: 2200 Ringwood Ave San Jose, CA 95131 USA



Please scan the QR code
to access additional
product information:
NF-1 Rabbit pAb

For Research Use Only. Not for Use in Diagnostic Procedures.

[Antibody](#) | [ELISA Kits](#) | [Protein](#) | [Reagents](#)