

Neurophysin I Rabbit pAb

CatalogNo: YT3072

Key Features

Host Species

- Rabbit

Reactivity

- Human, Rat

Applications

- WB, IHC, IF, ELISA

MW

- 19kD (Observed)

Isotype

- IgG

Recommended Dilution Ratios

WB 1:500-1:2000

IHC 1:100-1:300

ELISA 1:20000

IF 1:50-200

Storage

Storage*

-15°C to -25°C/1 year (Do not lower than -25°C)

Formulation

Liquid in PBS containing 50% glycerol, 0.5% BSA and 0.02% sodium azide.

Basic Information

Clonality

Polyclonal

Immunogen Information

Immunogen

The antiserum was produced against synthesized peptide derived from human Neurophysin I. AA range: 40-89

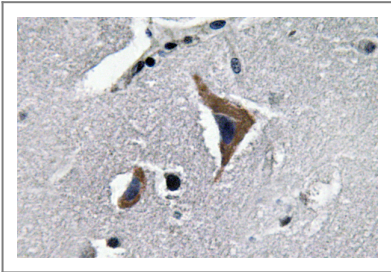
Specificity

Neurophysin I Polyclonal Antibody detects endogenous levels of Neurophysin I protein.

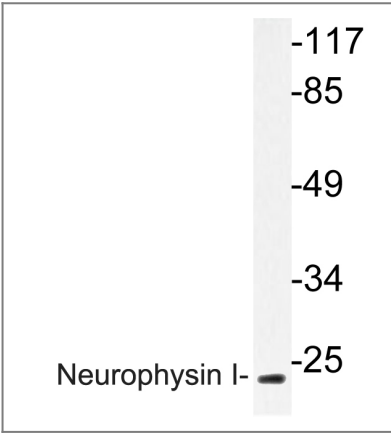
Target Information

Gene name	OXT		
Protein Name	Oxytocin-neurophysin 1		
	Organism	Gene ID	UniProt ID
	Human	5020;	P01178;
	Mouse		P35454;
	Rat	25504;	P01179;
Cellular Localization	Secreted.		
Tissue specificity	Lung,		
Function	Function:Neurophysin 1 specifically binds oxytocin.,Function:Oxytocin causes contraction of the smooth muscle of the uterus and of the mammary gland.,online information:Oxytocin entry,pharmaceutical:Oxytocin is available under the names Pitocin (Parke-Davis) and Syntocinon (Sandoz). Used to artificially speed or induce labor.,similarity:Belongs to the vasopressin/oxytocin family.,		

| Validation Data



Immunohistochemistry analysis of Neurophysin I antibody in paraffin-embedded human brain tissue.



Western blot analysis of lysate from K562 cells, using Neurophysin I antibody.

| Contact information

Orders: order@immunoway.com
Support: tech@immunoway.com
Telephone: 877-594-3616 (Toll Free), 408-747-0185
Website: <http://www.immunoway.com>
Address: 2200 Ringwood Ave San Jose, CA 95131 USA



Please scan the QR code
to access additional
product information:
Neurophysin I
Rabbit pAb

For Research Use Only. Not for Use in Diagnostic Procedures.

[Antibody](#) | [ELISA Kits](#) | [Protein](#) | [Reagents](#)