

Neuro D Rabbit pAb

CatalogNo: YT3061

Key Features

Host Species

- Rabbit

Reactivity

- Human, Mouse, Rat

Applications

- WB, ELISA, IHC

MW

- 36kD (Observed)

Isotype

- IgG

Recommended Dilution Ratios

WB 1:500-2000

IHC 1:50-300

ELISA 1:2000-20000

Storage

Storage*

-15°C to -25°C/1 year(Do not lower than -25°C)

Formulation

Liquid in PBS containing 50% glycerol, 0.5% BSA and 0.02% sodium azide.

Basic Information

Clonality

Polyclonal

Immunogen Information

Immunogen

The antiserum was produced against synthesized peptide derived from human NEUROD1. AA range:240-289

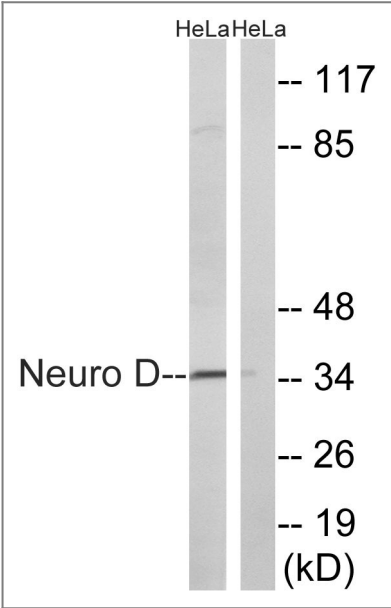
Specificity

Neuro D Polyclonal Antibody detects endogenous levels of Neuro D protein.

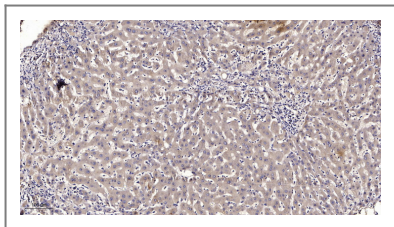
Target Information

Gene name	NEUROD1		
Protein Name	Neurogenic differentiation factor 1		
	Organism	Gene ID	UniProt ID
	Human	4760 ;	Q13562 ;
	Mouse	18012 ;	Q60867 ;
	Rat	29458 ;	Q64289 ;
Cellular Localization	Cytoplasm . Nucleus . In pancreatic islet cells, shuttles to the nucleus in response to glucose stimulation (By similarity). Colocalizes with NR0B2 in the nucleus. .		
Tissue specificity	Eye,Retina,Rhabdomyosarcoma,		
Function	Disease:Defects in NEUROD1 are the cause of maturity onset diabetes of the young type 6 (MODY6) [MIM:606394]. MODY [MIM:606391] is characterized by an autosomal dominant mode of inheritance, onset during young adulthood and a primary defect in insulin secretion.,Function:Differentiation factor required for dendrite morphogenesis and maintenance in the cerebellar cortex. Transcriptional activator. Binds to the insulin gene E-box.,PTM:Phosphorylated. In islet cells, phosphorylated on Ser-274 upon glucose stimulation; which may be required for nuclear localization. In activated neurons, phosphorylated on Ser-335; which promotes dendritic growth.,similarity:Contains 1 basic helix-loop-helix (bHLH) domain.,subunit:Efficient DNA binding requires dimerization with another bHLH protein. Heterodimer with TCF3/E47. Interacts with RREB1.,		

| Validation Data



Western blot analysis of lysates from HeLa cells, using Neuro D Antibody. The lane on the right is blocked with the synthesized peptide.



Immunohistochemical analysis of paraffin-embedded human liver cancer. 1, Antibody was diluted at 1:200(4° overnight). 2, Tris-EDTA,pH9.0 was used for antigen retrieval. 3,Secondary antibody was diluted at 1:200(room temperature, 45min).

| Contact information

Orders: order@immunoway.com
Support: tech@immunoway.com
Telephone: 877-594-3616 (Toll Free), 408-747-0185
Website: <http://www.immunoway.com>
Address: 2200 Ringwood Ave San Jose, CA 95131 USA



Please scan the QR code
to access additional
product information:
Neuro D Rabbit pAb

For Research Use Only. Not for Use in Diagnostic Procedures.

[Antibody](#) | [ELISA Kits](#) | [Protein](#) | [Reagents](#)