

NEDL2 Rabbit pAb

CatalogNo: YT3027

Key Features

Host Species

- Rabbit

Reactivity

- Human, Mouse

Applications

- WB, ELISA

MW

- 140-150kD (Observed)

Isotype

- IgG

Recommended Dilution Ratios

WB 1:500-1:2000

ELISA 1:10000

Not yet tested in other applications.

Storage

Storage*

-15°C to -25°C/1 year (Do not lower than -25°C)

Formulation

Liquid in PBS containing 50% glycerol, 0.5% BSA and 0.02% sodium azide.

Basic Information

Clonality

Polyclonal

Immunogen Information

Immunogen

The antiserum was produced against synthesized peptide derived from human HECW2. AA range: 481-530

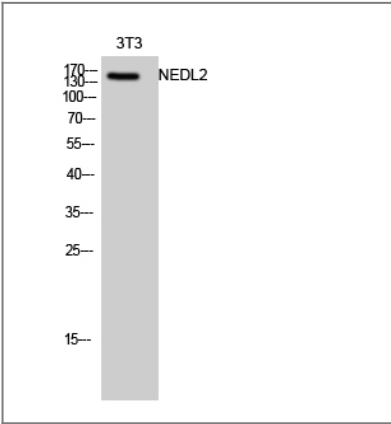
Specificity

NEDL2 Polyclonal Antibody detects endogenous levels of NEDL2 protein.

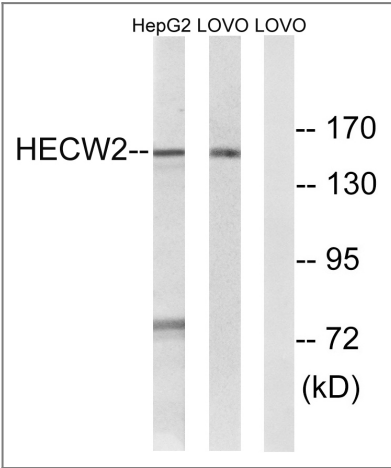
Target Information

Gene name	HECW2		
Protein Name	E3 ubiquitin-protein ligase HECW2		
	Organism	Gene ID	UniProt ID
	Human	57520 ;	Q9P2P5 ;
	Mouse		Q6I6G8 ;
Cellular Localization	Cytoplasm . Cytoplasm, cytoskeleton, spindle .		
Tissue specificity	Predominantly expressed in adult brain, lung and heart.		
Function	Function:E3 ubiquitin-protein ligase that mediates ubiquitination of TP73. Acts to stabilize TP73 and enhance activation of transcription by TP73.,pathway:Protein modification; protein ubiquitination.,similarity:Contains 1 C2 domain.,similarity:Contains 1 HECT (E6AP-type E3 ubiquitin-protein ligase) domain.,similarity:Contains 2 WW domains.,subunit:Interacts with TP73.,tissue specificity:Predominantly expressed in adult brain, lung and heart.,		

| Validation Data



Western Blot analysis of 3T3 cells using NEDL2 Polyclonal Antibody diluted at 1:1000



Western blot analysis of lysates from LOVO and HepG2 cells, using HECW2 Antibody. The lane on the right is blocked with the synthesized peptide.

| Contact information

Orders: order@immunoway.com
Support: tech@immunoway.com
Telephone: 877-594-3616 (Toll Free), 408-747-0185
Website: <http://www.immunoway.com>
Address: 2200 Ringwood Ave San Jose, CA 95131 USA



Please scan the QR code
to access additional
product information:
NEDL2 Rabbit pAb

For Research Use Only. Not for Use in Diagnostic Procedures.

[Antibody](#) | [ELISA Kits](#) | [Protein](#) | [Reagents](#)