

NDUFC1 Rabbit pAb

CatalogNo: YT3015

Key Features

Host Species

- Rabbit

Reactivity

- Human, Mouse

Applications

- IHC, IF, ELISA

MW

- 9kD (Calculated)

Isotype

- IgG

Recommended Dilution Ratios

IHC 1:100-1:300

ELISA 1:10000

IF 1:50-200

Storage

Storage*

-15°C to -25°C/1 year(Do not lower than -25°C)

Formulation

Liquid in PBS containing 50% glycerol, 0.5% BSA and 0.02% sodium azide.

Basic Information

Clonality

Polyclonal

Immunogen Information

Immunogen

Synthesized peptide derived from NDUFC1 . at AA range: 40-120

Specificity

NDUFC1 Polyclonal Antibody detects endogenous levels of NDUFC1 protein.

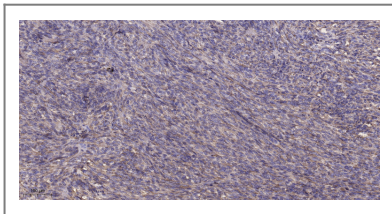
Target Information

Gene name

NDUFC1

Protein Name	NADH dehydrogenase [ubiquinone] 1 subunit C1 mitochondrial		
	Organism	Gene ID	UniProt ID
	Human	4717;	O43677;
	Mouse	66377;	Q9CQY9;
Cellular Localization	Mitochondrion inner membrane ; Single-pass membrane protein ; Matrix side .		
Tissue specificity	Brain,Heart,Skin,Umbilical cord blood,		
Function	Function:Accessory subunit of the mitochondrial membrane respiratory chain NADH dehydrogenase (Complex I), that is believed to be not involved in catalysis. Complex I functions in the transfer of electrons from NADH to the respiratory chain. The immediate electron acceptor for the enzyme is believed to be ubiquinone.,similarity:Belongs to the complex I NDUFC1 subunit family.,subunit:Complex I is composed of 45 different subunits.,		

Validation Data



Immunohistochemical analysis of paraffin-embedded human Colon cancer. 1, Antibody was diluted at 1:200(4° overnight). 2, Tris-EDTA,pH9.0 was used for antigen retrieval. 3,Secondary antibody was diluted at 1:200(room temperature, 45min).

Contact information

Orders: order@immunoway.com
 Support: tech@immunoway.com
 Telephone: 877-594-3616 (Toll Free), 408-747-0185
 Website: <http://www.immunoway.com>
 Address: 2200 Ringwood Ave San Jose, CA 95131 USA



Please scan the QR code
 to access additional
 product information:
NDUFC1 Rabbit pAb

For Research Use Only. Not for Use in Diagnostic Procedures.

[Antibody](#) | [ELISA Kits](#) | [Protein](#) | [Reagents](#)