

## Ndfip1 Rabbit pAb

CatalogNo: YT3002

### Key Features

#### Host Species

- Rabbit

#### Reactivity

- Human, Mouse, Rat

#### Applications

- WB, ELISA

#### MW

- 25kD (Observed)

#### Isotype

- IgG

### Recommended Dilution Ratios

**WB 1:500-1:2000**

**ELISA 1:40000**

**Not yet tested in other applications.**

### Storage

#### Storage\*

-15°C to -25°C/1 year (Do not lower than -25°C)

#### Formulation

Liquid in PBS containing 50% glycerol, 0.5% BSA and 0.02% sodium azide.

### Basic Information

#### Clonality

Polyclonal

### Immunogen Information

#### Immunogen

Synthesized peptide derived from Ndfip1 . at AA range: 150-230

#### Specificity

Ndfip1 Polyclonal Antibody detects endogenous levels of Ndfip1 protein.

### Target Information

#### Gene name

NDFIP1

**Protein Name** NEDD4 family-interacting protein 1

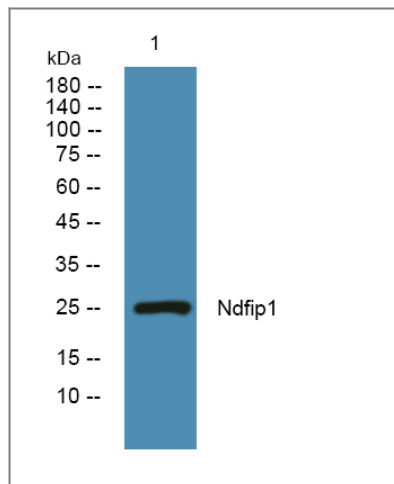
Organism	Gene ID	UniProt ID
Human	<a href="#">80762;</a>	<a href="#">Q9BT67;</a>
Mouse	<a href="#">65113;</a>	<a href="#">Q8R0W6;</a>
Rat	<a href="#">291609;</a>	<a href="#">Q5U2S1;</a>

**Cellular Localization** Endosome membrane ; Multi-pass membrane protein . Golgi apparatus membrane . Cell junction, synapse, synaptosome . Cell projection, dendrite . Secreted . Detected in exosomes and secreted via the exosomal pathway (PubMed:18819914).

**Tissue specificity** Widely expressed. Higher levels are detected in cerebellum, pituitary, thalamus, kidney, liver, testis, salivary glands and placenta. Also expressed in fetal brain, kidney and lung.

**Function** developmental stage:Expressed in fetal brain, kidney and lung.,Domain:The WW-binding motifs mediate interaction with NEDD4.,Function:May play a role in Golgi structure maintenance.,PTM:Ubiquitinated by NEDD4; mono-, di- and polyubiquitinated forms are detected. Ubiquitination regulates its degradation.,subunit:Interacts with NEDD4. Interacts in vitro with NEDD4L, SR140, WWP2 and ITCH.,tissue specificity:Widely expressed. Higher levels are detected in cerebellum, pituitary, thalamus, kidney, liver, testis, salivary glands and placenta.,

## Validation Data



Western blot analysis of lysates from Jurkat cells, primary antibody was diluted at 1:1000, 4° over night

## Contact information

Orders: [order@immunoway.com](mailto:order@immunoway.com)  
Support: [tech@immunoway.com](mailto:tech@immunoway.com)  
Telephone: 877-594-3616 (Toll Free), 408-747-0185  
Website: <http://www.immunoway.com>  
Address: 2200 Ringwood Ave San Jose, CA 95131 USA



Please scan the QR code to access additional product information:  
**Ndfip1 Rabbit pAb**

