

## NCKX1 Rabbit pAb

CatalogNo: YT2992

### Key Features

#### Host Species

- Rabbit

#### Reactivity

- Human,Rat,Mouse,

#### Applications

- WB,ELISA

#### MW

- 125kD (Observed)

#### Isotype

- IgG

### Recommended Dilution Ratios

**WB 1:500-1:2000**

**ELISA 1:10000**

**Not yet tested in other applications.**

### Storage

#### Storage\*

-15°C to -25°C/1 year(Do not lower than -25°C)

#### Formulation

Liquid in PBS containing 50% glycerol, 0.5% BSA and 0.02% sodium azide.

### Basic Information

#### Clonality

Polyclonal

### Immunogen Information

#### Immunogen

The antiserum was produced against synthesized peptide derived from human SLC24A1. AA range:154-203

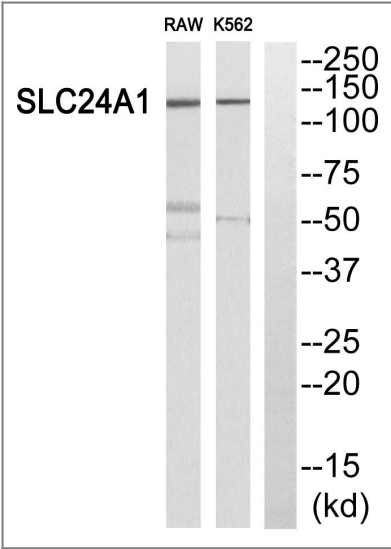
#### Specificity

NCKX1 Polyclonal Antibody detects endogenous levels of NCKX1 protein.

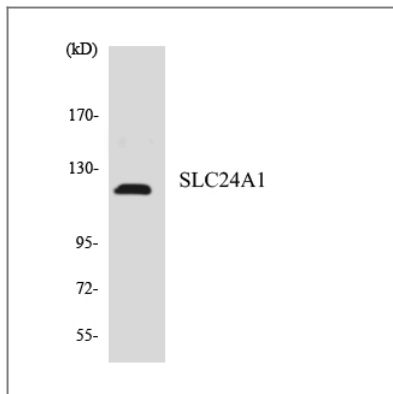
### Target Information

Gene name	SLC24A1		
Protein Name	Sodium/potassium/calcium exchanger 1		
	Organism	Gene ID	UniProt ID
	Human	<a href="#">9187</a> ;	<a href="#">O60721</a> ;
Cellular Localization	Cell membrane ; Multi-pass membrane protein .		
Tissue specificity	Expressed in the retina, particularly in the inner segment, outer and inner nuclear layers, and ganglion cell layer.		
Function	Function:Critical component of the visual transduction cascade, controlling the calcium concentration of outer segments during light and darkness. Light causes a rapid lowering of cytosolic free calcium in the outer segment of both retinal rod and cone photoreceptors and the light-induced lowering of calcium is caused by extrusion via this protein which plays a key role in the process of light adaptation. Transports 1 Ca(2+) and 1 K(+) in exchange for 4 Na(+).,PTM:The uncleaved signal sequence is required for efficient membrane targeting and proper membrane integration.,similarity:Belongs to the sodium/potassium/calcium exchanger family. SLC24A subfamily.,tissue specificity:Found only in the outer segments of retinal rod photoreceptors.,		

Validation Data



Western blot analysis of SLC24A1 Antibody. The lane on the right is blocked with the SLC24A1 peptide.



Western blot analysis of the lysates from HepG2 cells using SLC24A1 antibody.

## Contact information

Orders: [order@immunoway.com](mailto:order@immunoway.com)  
Support: [tech@immunoway.com](mailto:tech@immunoway.com)  
Telephone: 877-594-3616 (Toll Free), 408-747-0185  
Website: <http://www.immunoway.com>  
Address: 2200 Ringwood Ave San Jose, CA 95131 USA



Please scan the QR code to access additional product information:  
**NCKX1 Rabbit pAb**

For Research Use Only. Not for Use in Diagnostic Procedures.

[Antibody](#) | [ELISA Kits](#) | [Protein](#) | [Reagents](#)