

## MYLK Rabbit pAb

CatalogNo: YT2942

Orthogonal Validated 

### Key Features

**Host Species**

- Rabbit

**Reactivity**

- Human, Mouse, Rat

**Applications**

- WB, ELISA, IHC

**MW**

- 200kD (Observed)

**Isotype**

- IgG

### Recommended Dilution Ratios

**WB 1:500-2000****IHC 1:50-300****ELISA 1:2000-20000**

### Storage

**Storage\***

-15°C to -25°C/1 year (Do not lower than -25°C)

**Formulation**

Liquid in PBS containing 50% glycerol, 0.5% BSA and 0.02% sodium azide.

### Basic Information

**Clonality**

Polyclonal

### Immunogen Information

**Immunogen**

The antiserum was produced against synthesized peptide derived from human MYLK. AA range: 1701-1750

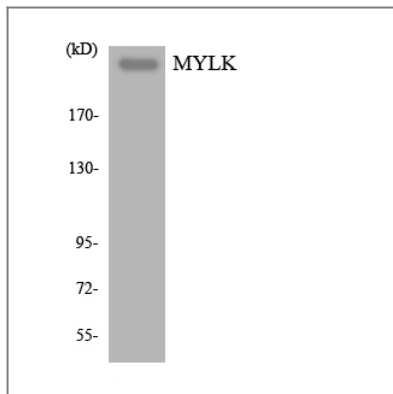
**Specificity**

MYLK Polyclonal Antibody detects endogenous levels of MYLK protein.

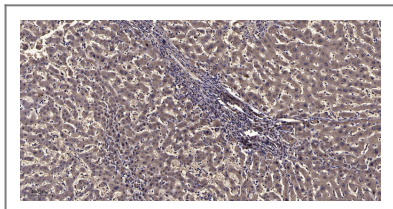
### Target Information

Gene name	MYLK MLCK MLCK1 MYLK1		
Protein Name	Myosin light chain kinase smooth muscle		
	Organism	Gene ID	UniProt ID
	Human	<a href="#">4638</a> ;	<a href="#">Q15746</a> ;
	Mouse		<a href="#">Q6PDN3</a> ;
Cellular Localization	Cytoplasm . Cell projection, lamellipodium . Cleavage furrow . Cytoplasm, cytoskeleton, stress fiber . Localized to stress fibers during interphase and to the cleavage furrow during mitosis. .		
Tissue specificity	Smooth muscle and non-muscle isozymes are expressed in a wide variety of adult and fetal tissues and in cultured endothelium with qualitative expression appearing to be neither tissue- nor development-specific. Non-muscle isoform 2 is the dominant splice variant expressed in various tissues. Telokin has been found in a wide variety of adult and fetal tissues. Accumulates in well differentiated enterocytes of the intestinal epithelium in response to tumor necrosis factor (TNF).		
Function	<p>Alternative products:Additional isoforms seem to exist,Catalytic activity:ATP + [myosin light-chain] = ADP + [myosin light-chain] phosphate.,cofactor:Calcium.,cofactor:Magnesium.,enzyme regulation:Isoform 1 is activated by phosphorylation on Tyr-464 and Tyr-471. Isoforms which lack these tyrosine residues are not regulated in this way. All catalytically active isoforms require binding to calcium and calmodulin for activation.,Function:Calcium/calmodulin-dependent enzyme implicated in smooth muscle contraction via phosphorylation of myosin light chains (MLC). Implicated in the regulation of endothelial as well as vascular permeability. In the nervous system it has been shown to control the growth initiation of astrocytic processes in culture and to participate in transmitter release at synapses formed between cultured sympathetic ganglion cells. Critical participant in signaling sequences that result in fibroblast apoptosis.,online information:Myosin light-chain kinase entry,PTM:MLCK is probably down-regulated by phosphorylation.,similarity:Belongs to the protein kinase superfamily. CAMK Ser/Thr protein kinase family.,similarity:Contains 1 fibronectin type-III domain.,similarity:Contains 1 protein kinase domain.,similarity:Contains 9 Ig-like C2-type (immunoglobulin-like) domains.,subunit:All isoforms including Telokin bind calmodulin.,tissue specificity:Smooth muscle and non-muscle isozymes are expressed in a wide variety of adult and fetal tissues and in cultured endothelium with qualitative expression appearing to be neither tissue- nor development-specific. Non-muscle isoform 2 is the dominant splice variant expressed in various tissues. Telokin has been found in a wide variety of adult and fetal tissues.,</p>		

| Validation Data



Western blot analysis of the lysates from HT-29 cells using MYLK antibody.



Immunohistochemical analysis of paraffin-embedded human liver cancer. 1, Antibody was diluted at 1:200(4° overnight). 2, Tris-EDTA,pH9.0 was used for antigen retrieval. 3,Secondary antibody was diluted at 1:200(room temperature, 45min).

## Contact information

Orders: [order@immunoway.com](mailto:order@immunoway.com)  
Support: [tech@immunoway.com](mailto:tech@immunoway.com)  
Telephone: 877-594-3616 (Toll Free), 408-747-0185  
Website: <http://www.immunoway.com>  
Address: 2200 Ringwood Ave San Jose, CA 95131 USA



Please scan the QR code  
to access additional  
product information:  
**MYLK Rabbit pAb**

For Research Use Only. Not for Use in Diagnostic Procedures.

[Antibody](#) | [ELISA Kits](#) | [Protein](#) | [Reagents](#)