

MMP-14 Rabbit pAb

CatalogNo: YT2910

Orthogonal Validated 

Key Features

Host Species

- Rabbit

Reactivity

- Human, Mouse, Rat

Applications

- WB, IHC, IF, ELISA

MW

- 65kD (Observed)

Isotype

- IgG

Recommended Dilution Ratios

WB 1:500-1:2000**IHC 1:100-1:300****ELISA 1:10000****IF 1:50-200**

Storage

Storage*

-15°C to -25°C/1 year (Do not lower than -25°C)

Formulation

Liquid in PBS containing 50% glycerol, 0.5% BSA and 0.02% sodium azide.

Basic Information

Clonality

Polyclonal

Immunogen Information

Immunogen

The antiserum was produced against synthesized peptide derived from human MMP-14. AA range: 471-520

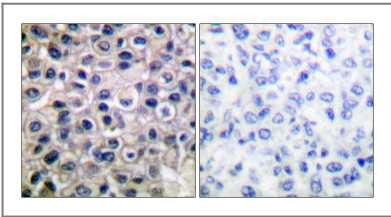
Specificity

MMP-14 Polyclonal Antibody detects endogenous levels of MMP-14 protein.

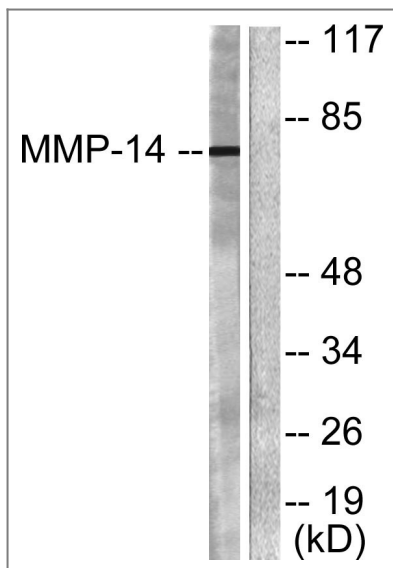
Target Information

Gene name	MMP14												
Protein Name	Matrix metalloproteinase-14												
	<table><tr><th>Organism</th><th>Gene ID</th><th>UniProt ID</th></tr><tr><td>Human</td><td>4323;</td><td>P50281;</td></tr><tr><td>Mouse</td><td>17387;</td><td>P53690;</td></tr><tr><td>Rat</td><td>81707;</td><td>Q10739;</td></tr></table>	Organism	Gene ID	UniProt ID	Human	4323 ;	P50281 ;	Mouse	17387 ;	P53690 ;	Rat	81707 ;	Q10739 ;
Organism	Gene ID	UniProt ID											
Human	4323 ;	P50281 ;											
Mouse	17387 ;	P53690 ;											
Rat	81707 ;	Q10739 ;											
Cellular Localization	Membrane ; Single-pass type I membrane protein . Melanosome. Cytoplasm. Identified by mass spectrometry in melanosome fractions from stage I to stage IV. Forms a complex with BST2 and localizes to the cytoplasm.												
Tissue specificity	Expressed in stromal cells of colon, breast, and head and neck. Expressed in lung tumors.												
Function	Catalytic activity:Endopeptidase activity. Activates progelatinase A by cleavage of the propeptide at 37-Asn- -Leu-38. Other bonds hydrolyzed include 35-Gly- -Ile-36 in the propeptide of collagenase 3, and 341-Asn- -Phe-342, 441-Asp- -Leu-442 and 354-Gln- -Thr-355 in the aggrecan interglobular domain.,cofactor:Binds 1 zinc ion per subunit.,cofactor:Calcium.,Domain:The conserved cysteine present in the cysteine-switch motif binds the catalytic zinc ion, thus inhibiting the enzyme. The dissociation of the cysteine from the zinc ion upon the activation-peptide release activates the enzyme.,Function:Seems to specifically activate progelatinase A. May thus trigger invasion by tumor cells by activating progelatinase A on the tumor cell surface.,PTM:The precursor is cleaved by a furin endopeptidase.,similarity:Belongs to the peptidase M10A family.,similarity:Contains 4 hemopexin-like domains.,subcellular location:Identified by mass spectrometry in melanosome fractions from stage I to stage IV.,tissue specificity:In stromal cells of colon, breast, and head and neck.,												

| Validation Data



Immunohistochemistry analysis of paraffin-embedded human breast carcinoma tissue, using MMP-14 Antibody. The picture on the right is blocked with the synthesized peptide.



Western blot analysis of lysates from NIH/3T3 cells, using MMP-14 Antibody. The lane on the right is blocked with the synthesized peptide.

Contact information

Orders: order@immunoway.com
Support: tech@immunoway.com
Telephone: 877-594-3616 (Toll Free), 408-747-0185
Website: <http://www.immunoway.com>
Address: 2200 Ringwood Ave San Jose, CA 95131 USA



Please scan the QR code to access additional product information:
MMP-14 Rabbit pAb

For Research Use Only. Not for Use in Diagnostic Procedures.

[Antibody](#) | [ELISA Kits](#) | [Protein](#) | [Reagents](#)