

## MRP-S7 Rabbit pAb

CatalogNo: YT2892

### Key Features

#### Host Species

- Rabbit

#### Reactivity

- Human, Mouse, Rat

#### Applications

- WB, IHC, IF, ELISA

#### MW

- 24kD (Observed)

#### Isotype

- IgG

### Recommended Dilution Ratios

**WB 1:500-1:2000**

**IHC 1:100-1:300**

**ELISA 1:40000**

**IF 1:50-200**

### Storage

**Storage\*** -15°C to -25°C/1 year (Do not lower than -25°C)

**Formulation** Liquid in PBS containing 50% glycerol, 0.5% BSA and 0.02% sodium azide.

### Basic Information

**Clonality** Polyclonal

### Immunogen Information

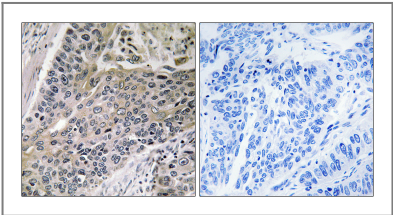
**Immunogen** The antiserum was produced against synthesized peptide derived from human MRPS7. AA range: 91-140

**Specificity** MRP-S7 Polyclonal Antibody detects endogenous levels of MRP-S7 protein.

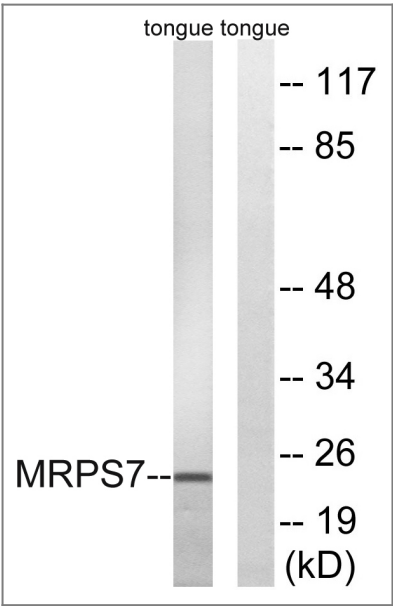
### Target Information

Gene name	MRPS7		
Protein Name	28S ribosomal protein S7 mitochondrial		
	Organism	Gene ID	UniProt ID
	Human	<a href="#">51081</a> ;	<a href="#">Q9Y2R9</a> ;
	Mouse	<a href="#">50529</a> ;	<a href="#">Q80X85</a> ;
	Rat	<a href="#">113958</a> ;	<a href="#">Q5I0K8</a> ;
Cellular Localization	Mitochondrion .		
Tissue specificity	Eye,Skeletal muscle,Small intestine,Umbilical cord blood,		
Function	similarity:Belongs to the ribosomal protein S7P family.,subunit:Component of the mitochondrial ribosome small subunit (28S) which comprises a 12S rRNA and about 30 distinct proteins.,		

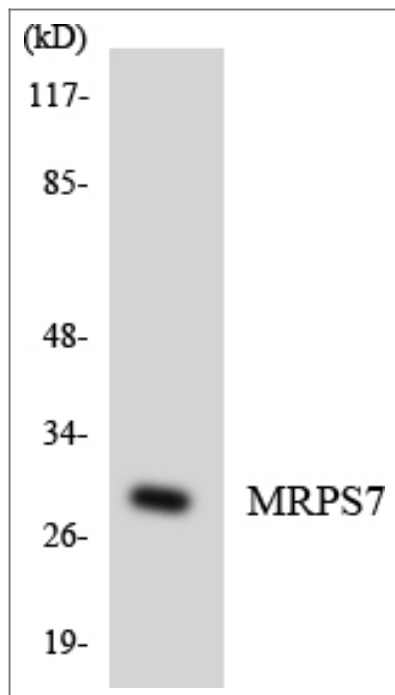
| Validation Data



Immunohistochemistry analysis of paraffin-embedded human lung carcinoma tissue, using MRPS7 Antibody. The picture on the right is blocked with the synthesized peptide.



Western blot analysis of lysates from rat tongue cells, using MRPS7 Antibody. The lane on the right is blocked with the synthesized peptide.



Western blot analysis of the lysates from HeLa cells using MRPS7 antibody.

## Contact information

Orders: [order@immunoway.com](mailto:order@immunoway.com)  
Support: [tech@immunoway.com](mailto:tech@immunoway.com)  
Telephone: 877-594-3616 (Toll Free), 408-747-0185  
Website: <http://www.immunoway.com>  
Address: 2200 Ringwood Ave San Jose, CA 95131 USA



Please scan the QR code to access additional product information:  
**MRP-S7 Rabbit pAb**

For Research Use Only. Not for Use in Diagnostic Procedures.

[Antibody](#) | [ELISA Kits](#) | [Protein](#) | [Reagents](#)