

MRP-S2 Rabbit pAb

CatalogNo: YT2879

Key Features

Host Species

- Rabbit

Reactivity

- Human, Mouse

Applications

- WB, IHC, IF, ELISA

MW

- 33kD (Observed)

Isotype

- IgG

Recommended Dilution Ratios

WB 1:500-1:2000

IHC 1:100-1:300

ELISA 1:5000

IF 1:50-200

Storage

Storage*

-15°C to -25°C/1 year (Do not lower than -25°C)

Formulation

Liquid in PBS containing 50% glycerol, 0.5% BSA and 0.02% sodium azide.

Basic Information

Clonality

Polyclonal

Immunogen Information

Immunogen

The antiserum was produced against synthesized peptide derived from human MRPS2. AA range: 236-285

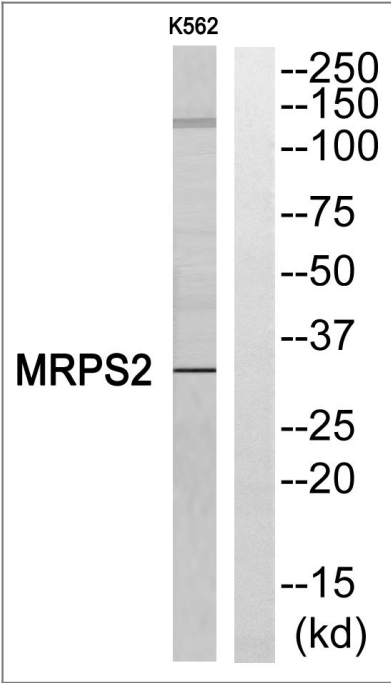
Specificity

MRP-S2 Polyclonal Antibody detects endogenous levels of MRP-S2 protein.

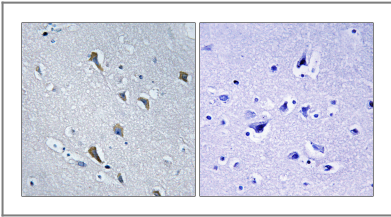
Target Information

Gene name	MRPS2		
Protein Name	28S ribosomal protein S2 mitochondrial		
	Organism	Gene ID	UniProt ID
	Human	51116 ;	Q9Y399 ;
	Mouse		Q924T2 ;
Cellular Localization	Mitochondrion .		
Tissue specificity	Brain,Lung,Skin,		
Function	sequence Caution:Wrong choice of frame.,similarity:Belongs to the ribosomal protein S2P family.,subunit:Component of the mitochondrial ribosome small subunit (28S) which comprises a 12S rRNA and about 30 distinct proteins.,		

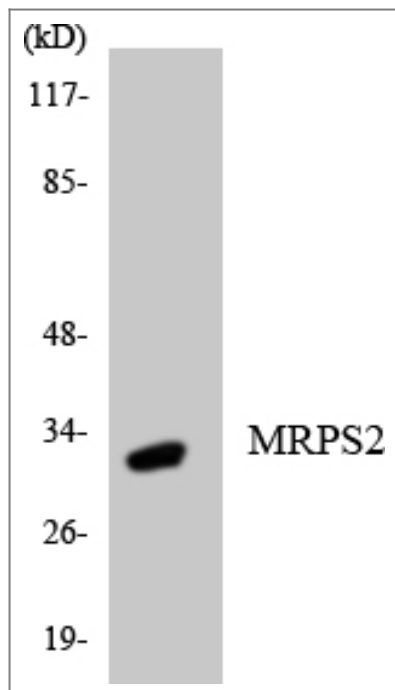
| Validation Data



Western blot analysis of MRPS2 Antibody. The lane on the right is blocked with the MRPS2 peptide.



Immunohistochemistryt analysis of paraffin-embedded human brain, using MRPS2 Antibody. The lane on the right is blocked with the MRPS2 peptide.



Western blot analysis of the lysates from HepG2 cells using MRPS2 antibody.

Contact information

Orders: order@immunoway.com
Support: tech@immunoway.com
Telephone: 877-594-3616 (Toll Free), 408-747-0185
Website: <http://www.immunoway.com>
Address: 2200 Ringwood Ave San Jose, CA 95131 USA



Please scan the QR code
to access additional
product information:
MRP-S2 Rabbit pAb

For Research Use Only. Not for Use in Diagnostic Procedures.

[Antibody](#) | [ELISA Kits](#) | [Protein](#) | [Reagents](#)