

MRP-L9 Rabbit pAb

CatalogNo: YT2873

Key Features

Host Species

- Rabbit

Reactivity

- Human,Rat,Mouse,

Applications

- WB,IHC

MW

- 30kD (Observed)

Isotype

- IgG

Recommended Dilution Ratios

WB 1:500-2000

IHC 1:50-300

Storage

Storage* -15°C to -25°C/1 year(Do not lower than -25°C)

Formulation Liquid in PBS containing 50% glycerol, 0.5% BSA and 0.02% sodium azide.

Basic Information

Clonality Polyclonal

Immunogen Information

Immunogen The antiserum was produced against synthesized peptide derived from human MRPL9. AA range:211-260

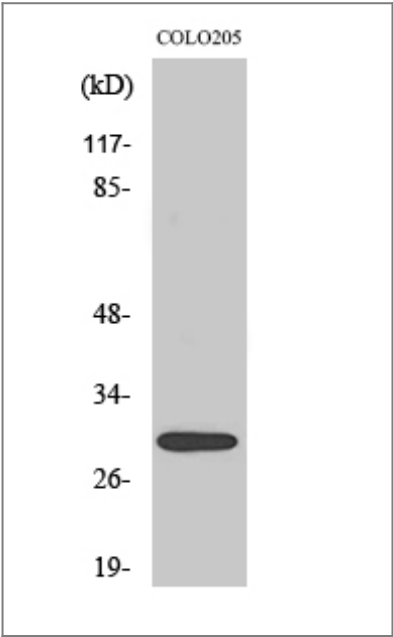
Specificity MRP-L9 Polyclonal Antibody detects endogenous levels of MRP-L9 protein.

Target Information

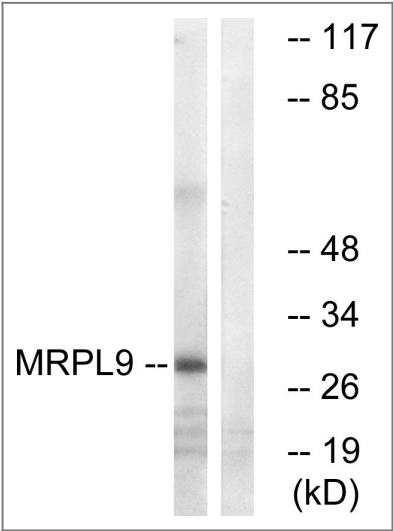
Gene name MRPL9

| | | | |
|-----------------------|--|-------------------------|--------------------------|
| Protein Name | 39S ribosomal protein L9 mitochondrial | | |
| | Organism | Gene ID | UniProt ID |
| | Human | 65005 ; | Q9BYD2 ; |
| | Mouse | | Q99N94 ; |
| Cellular Localization | Mitochondrion . | | |
| Tissue specificity | Lung, | | |
| Function | similarity:Belongs to the ribosomal protein L9P family., | | |

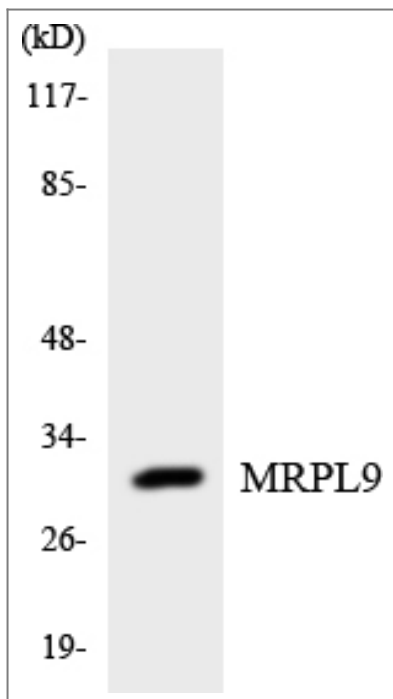
Validation Data



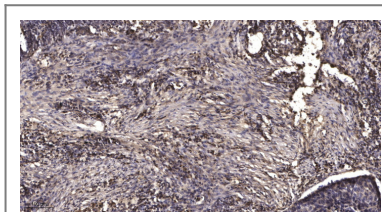
Western Blot analysis of various cells using MRP-L9 Polyclonal Antibody



Western blot analysis of lysates from COLO cells, using MRPL9 Antibody. The lane on the right is blocked with the synthesized peptide.



Western blot analysis of the lysates from HUVEC cells using MRPL9 antibody.



Immunohistochemical analysis of paraffin-embedded human Squamous cell carcinoma of lung. 1, Antibody was diluted at 1:200 (4° overnight). 2, Tris-EDTA, pH 9.0 was used for antigen retrieval. 3, Secondary antibody was diluted at 1:200 (room temperature, 45 min).

Contact information

Orders: order@immunoway.com
 Support: tech@immunoway.com
 Telephone: 877-594-3616 (Toll Free), 408-747-0185
 Website: <http://www.immunoway.com>
 Address: 2200 Ringwood Ave San Jose, CA 95131 USA



Please scan the QR code
 to access additional
 product information:
MRP-L9 Rabbit pAb

For Research Use Only. Not for Use in Diagnostic Procedures.

[Antibody](#) | [ELISA Kits](#) | [Protein](#) | [Reagents](#)