

MRP-L50 Rabbit pAb

CatalogNo: YT2869

Key Features

Host Species

- Rabbit

Reactivity

- Human, Mouse

Applications

- WB, ELISA, IHC

MW

- 22kD (Observed)

Isotype

- IgG

Recommended Dilution Ratios

WB 1:500-2000

IHC 1:50-300

ELISA 1:2000-20000

Storage

Storage* -15°C to -25°C/1 year (Do not lower than -25°C)

Formulation Liquid in PBS containing 50% glycerol, 0.5% BSA and 0.02% sodium azide.

Basic Information

Clonality Polyclonal

Immunogen Information

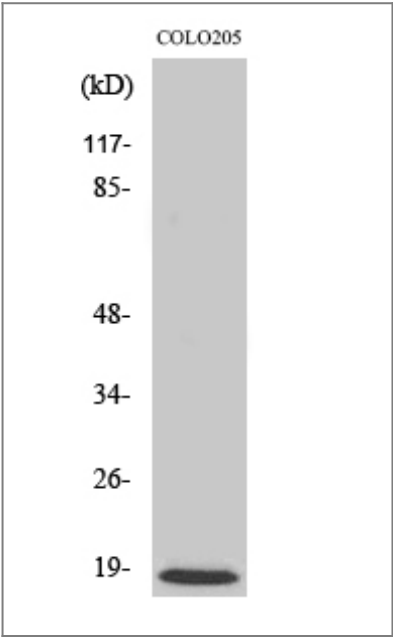
Immunogen The antiserum was produced against synthesized peptide derived from human MRPL50. AA range:109-158

Specificity MRP-L50 Polyclonal Antibody detects endogenous levels of MRP-L50 protein.

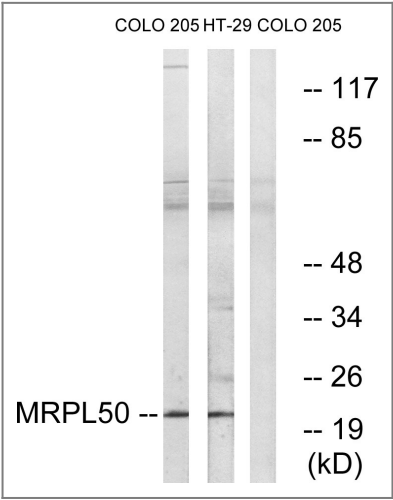
Target Information

Gene name	MRPL50		
Protein Name	39S ribosomal protein L50 mitochondrial		
	Organism	Gene ID	UniProt ID
	Human	54534 ;	Q8N5N7 ;
	Mouse		Q8VDT9 ;
Cellular Localization	Mitochondrion .		
Tissue specificity	Carcinoma,Epithelium,Hepatoma,Skin,		

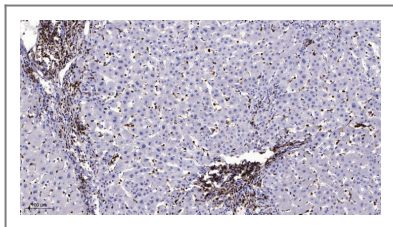
Validation Data



Western Blot analysis of various cells using MRP-L50 Polyclonal Antibody



Western blot analysis of lysates from COLO and HT-29 cells, using MRPL50 Antibody. The lane on the right is blocked with the synthesized peptide.



Immunohistochemical analysis of paraffin-embedded human liver cancer. 1, Antibody was diluted at 1:200(4° overnight). 2, Tris-EDTA,pH9.0 was used for antigen retrieval. 3,Secondary antibody was diluted at 1:200(room temperature, 45min).

| Contact information

Orders: order@immunoway.com
Support: tech@immunoway.com
Telephone: 877-594-3616 (Toll Free), 408-747-0185
Website: <http://www.immunoway.com>
Address: 2200 Ringwood Ave San Jose, CA 95131 USA



Please scan the QR code
to access additional
product information:
MRP-L50 Rabbit pAb

For Research Use Only. Not for Use in Diagnostic Procedures.

[Antibody](#) | [ELISA Kits](#) | [Protein](#) | [Reagents](#)