

MRP-L48 Rabbit pAb

CatalogNo: YT2867

Key Features

Host Species

- Rabbit

Reactivity

- Human, Mouse

Applications

- WB, IHC, IF, ELISA

MW

- 23kD (Observed)

Isotype

- IgG

Recommended Dilution Ratios

WB 1:500-1:2000

IHC 1:100-1:300

ELISA 1:10000

IF 1:50-200

Storage

Storage*

-15°C to -25°C/1 year (Do not lower than -25°C)

Formulation

Liquid in PBS containing 50% glycerol, 0.5% BSA and 0.02% sodium azide.

Basic Information

Clonality

Polyclonal

Immunogen Information

Immunogen

The antiserum was produced against synthesized peptide derived from human MRPL48. AA range: 161-210

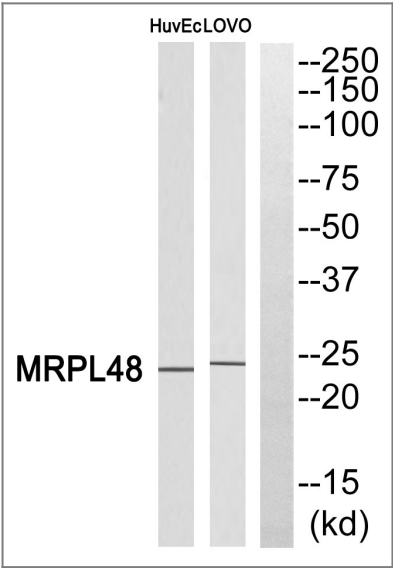
Specificity

MRP-L48 Polyclonal Antibody detects endogenous levels of MRP-L48 protein.

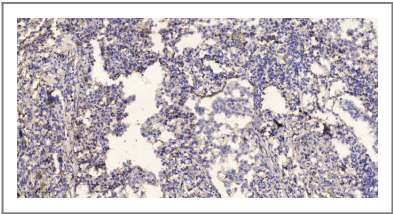
Target Information

Gene name	MRPL48		
Protein Name	39S ribosomal protein L48 mitochondrial		
	Organism	Gene ID	UniProt ID
	Human	51642 ;	Q96GC5 ;
	Mouse	52443 ;	Q8JZS9 ;
Cellular Localization	Mitochondrion .		
Tissue specificity	Brain,Umbilical cord blood,Urinary bladder,		
Function	translation,		

Validation Data



Western blot analysis of MRPL48 Antibody. The lane on the right is blocked with the MRPL48 peptide.



Immunohistochemical analysis of paraffin-embedded human Squamous cell carcinoma of lung. 1, Antibody was diluted at 1:200(4° overnight). 2, Tris-EDTA,pH9.0 was used for antigen retrieval. 3,Secondary antibody was diluted at 1:200(room temperature, 45min).

Contact information

Orders: order@immunoway.com
Support: tech@immunoway.com
Telephone: 877-594-3616 (Toll Free), 408-747-0185
Website: <http://www.immunoway.com>
Address: 2200 Ringwood Ave San Jose, CA 95131 USA



Please scan the QR code
to access additional
product information:
MRP-L48 Rabbit pAb

For Research Use Only. Not for Use in Diagnostic Procedures.

[Antibody](#) | [ELISA Kits](#) | [Protein](#) | [Reagents](#)