

MRP-L44 Rabbit pAb

CatalogNo: YT2864

| Key Features

Host Species

- Rabbit

Reactivity

- Human, Mouse, Rat, Monkey

Applications

- WB, IHC, IF, ELISA

MW

- 36kD (Observed)

Isotype

- IgG

| Recommended Dilution Ratios

WB 1:500-1:2000

IHC 1:100-1:300

IF 1:200-1:1000

ELISA 1:40000

Not yet tested in other applications.

| Storage

Storage*

-15°C to -25°C/1 year (Do not lower than -25°C)

Formulation

Liquid in PBS containing 50% glycerol, 0.5% BSA and 0.02% sodium azide.

| Basic Information

Clonality

Polyclonal

| Immunogen Information

Immunogen

The antiserum was produced against synthesized peptide derived from human MRPL44. AA range: 221-270

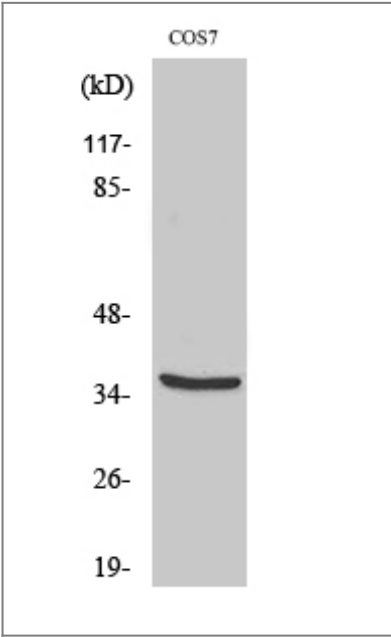
Specificity

MRP-L44 Polyclonal Antibody detects endogenous levels of MRP-L44 protein.

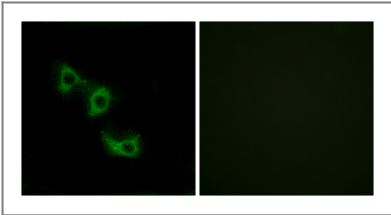
Target Information

Gene name	MRPL44		
Protein Name	39S ribosomal protein L44 mitochondrial		
	Organism	Gene ID	UniProt ID
	Human	65080 ;	Q9H9J2 ;
	Mouse	69163 ;	Q9CY73 ;
Cellular Localization	Mitochondrion .		
Tissue specificity	Uterus,		
Function	Function:Component of the 39S subunit of mitochondrial ribosome.,similarity:Contains 1 DRBM (double-stranded RNA-binding) domain.,similarity:Contains 1 RNase III domain.,		

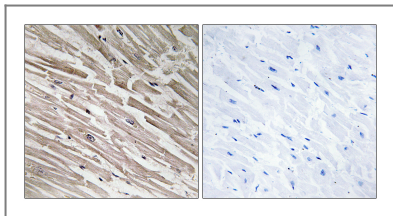
Validation Data



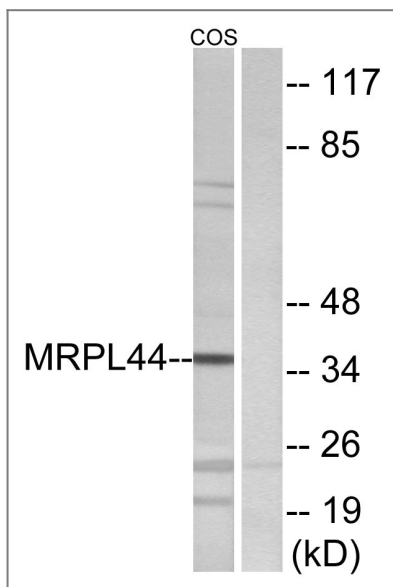
Western Blot analysis of various cells using MRP-L44 Polyclonal Antibody



Immunofluorescence analysis of HUVEC cells, using MRPL44 Antibody. The picture on the right is blocked with the synthesized peptide.



Immunohistochemistry analysis of paraffin-embedded human heart tissue, using MRPL44 Antibody. The picture on the right is blocked with the synthesized peptide.



Western blot analysis of lysates from COS7 cells, using MRPL44 Antibody. The lane on the right is blocked with the synthesized peptide.

Contact information

Orders: order@immunoway.com
 Support: tech@immunoway.com
 Telephone: 877-594-3616 (Toll Free), 408-747-0185
 Website: <http://www.immunoway.com>
 Address: 2200 Ringwood Ave San Jose, CA 95131 USA



Please scan the QR code to access additional product information:
MRP-L44 Rabbit pAb

For Research Use Only. Not for Use in Diagnostic Procedures.

[Antibody](#) | [ELISA Kits](#) | [Protein](#) | [Reagents](#)