

MRP-L39 Rabbit pAb

CatalogNo: YT2860

Key Features

Host Species

- Rabbit

Reactivity

- Human, Mouse

Applications

- WB, IHC, IF, ELISA

MW

- 39kD (Observed)

Isotype

- IgG

Recommended Dilution Ratios

WB 1:500-1:2000

IHC 1:100-1:300

ELISA 1:40000

IF 1:50-200

Storage

Storage*

-15°C to -25°C/1 year (Do not lower than -25°C)

Formulation

Liquid in PBS containing 50% glycerol, 0.5% BSA and 0.02% sodium azide.

Basic Information

Clonality

Polyclonal

Immunogen Information

Immunogen

The antiserum was produced against synthesized peptide derived from human MRPL39. AA range: 289-338

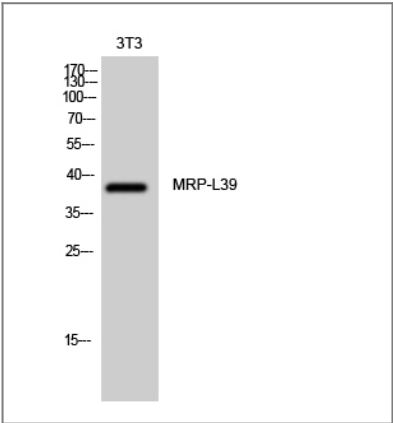
Specificity

MRP-L39 Polyclonal Antibody detects endogenous levels of MRP-L39 protein.

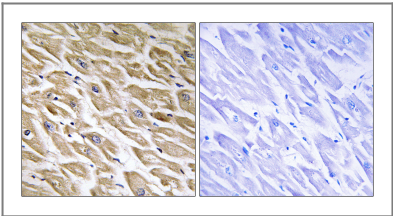
Target Information

Gene name	MRPL39		
Protein Name	39S ribosomal protein L39 mitochondrial		
	Organism	Gene ID	UniProt ID
	Human	54148 ;	Q9NYK5 ;
	Mouse		Q9JKF7 ;
Cellular Localization	Mitochondrion .		
Tissue specificity	Isoform 1 is ubiquitously expressed. Isoform 2 is heart-specific.		
Function	Caution:It is uncertain whether Met-1 or Met-6 is the initiator.,Caution:Ref.1 indicates C21orf8 as a synonym for this orf, this is incorrect, C21orf8 is already assigned to another chromosome 21 region.,similarity:To the N-terminal of threonyl-tRNA synthetases.,tissue specificity:Ubiquitous (isoform 1); heart-specific (isoform 2).,		

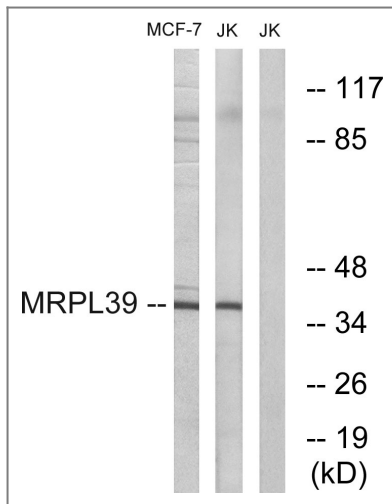
Validation Data



Western Blot analysis of 3T3 cells using MRP-L39 Polyclonal Antibody diluted at 1:1000



Immunohistochemistry analysis of paraffin-embedded human heart tissue, using MRPL39 Antibody. The picture on the right is blocked with the synthesized peptide.



Western blot analysis of lysates from Jurkat and MCF-7 cells, using MRPL39 Antibody. The lane on the right is blocked with the synthesized peptide.

Contact information

Orders: order@immunoway.com
 Support: tech@immunoway.com
 Telephone: 877-594-3616 (Toll Free), 408-747-0185
 Website: <http://www.immunoway.com>
 Address: 2200 Ringwood Ave San Jose, CA 95131 USA



Please scan the QR code to access additional product information:
MRP-L39 Rabbit pAb

For Research Use Only. Not for Use in Diagnostic Procedures.

[Antibody](#) | [ELISA Kits](#) | [Protein](#) | [Reagents](#)