

MRP-L3 Rabbit pAb

CatalogNo: YT2856

Key Features

Host Species

- Rabbit

Reactivity

- Human,Rat,Mouse,

Applications

- WB,ELISA,IHC

MW

- 38kD (Observed)

Isotype

- IgG

Recommended Dilution Ratios

WB 1:500-2000

IHC 1:50-300

ELISA 1:2000-20000

Storage

Storage* -15°C to -25°C/1 year(Do not lower than -25°C)

Formulation Liquid in PBS containing 50% glycerol, 0.5% BSA and 0.02% sodium azide.

Basic Information

Clonality Polyclonal

Immunogen Information

Immunogen Synthesized peptide derived from MRP-L3 . at AA range: 20-100

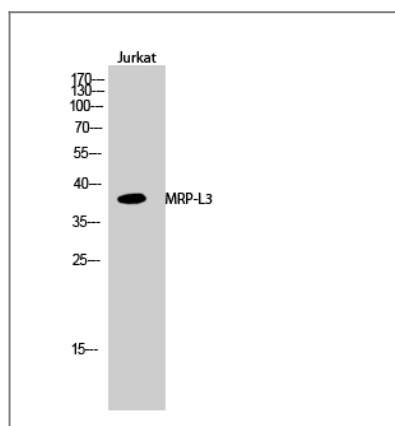
Specificity MRP-L3 Polyclonal Antibody detects endogenous levels of MRP-L3 protein.

Target Information

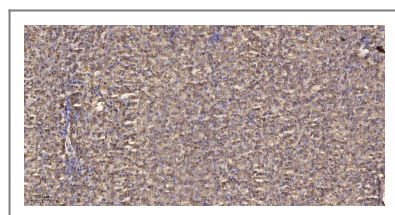
Gene name MRPL3

Protein Name	39S ribosomal protein L3 mitochondrial		
	Organism	Gene ID	UniProt ID
	Human	11222;	P09001;
	Mouse		Q99N95;
Cellular Localization	Mitochondrion .		
Tissue specificity	Cervix,		
Function	similarity:Belongs to the ribosomal protein L3P family.,		

Validation Data



Western Blot analysis of Jurkat cells using MRP-L3 Polyclonal Antibody



Immunohistochemical analysis of paraffin-embedded human liver cancer. 1, Antibody was diluted at 1:200(4° overnight). 2, Tris-EDTA,pH9.0 was used for antigen retrieval. 3,Secondary antibody was diluted at 1:200(room temperature, 45min).

Contact information

Orders: order@immunoway.com
 Support: tech@immunoway.com
 Telephone: 877-594-3616 (Toll Free), 408-747-0185
 Website: <http://www.immunoway.com>
 Address: 2200 Ringwood Ave San Jose, CA 95131 USA



Please scan the QR code
 to access additional
 product information:
MRP-L3 Rabbit pAb

