

MRP-L20 Rabbit pAb

CatalogNo: YT2852

| Key Features

Host Species

- Rabbit

Reactivity

- Human, Mouse, Rat

Applications

- WB, IHC, IF, ELISA

MW

- 22kD (Observed)

Isotype

- IgG

| Recommended Dilution Ratios

WB 1:500-1:2000

IHC 1:100-1:300

ELISA 1:40000

IF 1:50-200

| Storage

Storage* -15°C to -25°C/1 year (Do not lower than -25°C)

Formulation Liquid in PBS containing 50% glycerol, 0.5% BSA and 0.02% sodium azide.

| Basic Information

Clonality Polyclonal

| Immunogen Information

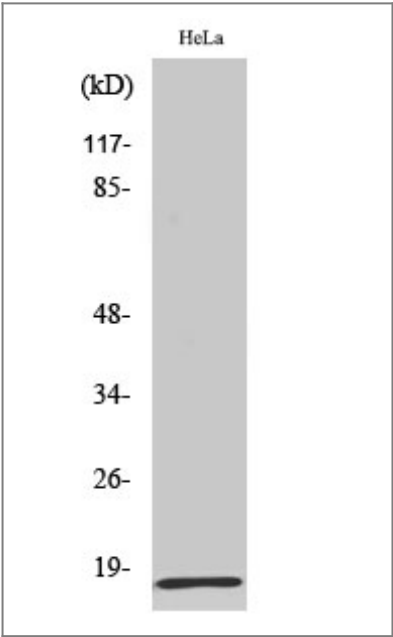
Immunogen The antiserum was produced against synthesized peptide derived from human MRPL20. AA range:100-149

Specificity MRP-L20 Polyclonal Antibody detects endogenous levels of MRP-L20 protein.

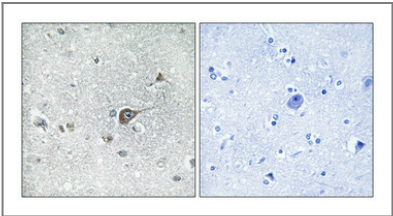
| Target Information

Gene name	MRPL20		
Protein Name	39S ribosomal protein L20 mitochondrial		
	Organism	Gene ID	UniProt ID
	Human	55052;	Q9BYC9;
	Mouse	66448;	Q9CQL4;
Cellular Localization	Mitochondrion .		
Tissue specificity	Bone marrow,Lymph,Mammary gland,Whole embryo,		
Function	similarity:Belongs to the ribosomal protein L20P family.,		

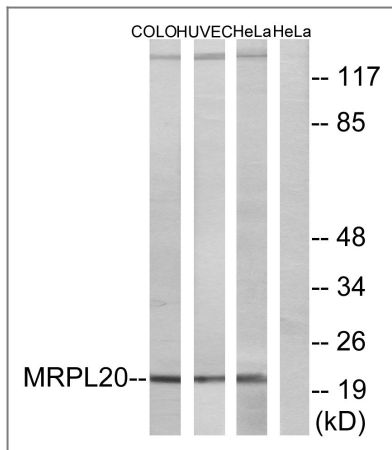
Validation Data



Western Blot analysis of various cells using MRP-L20 Polyclonal Antibody



Immunohistochemical analysis of paraffin-embedded Human brain. Antibody was diluted at 1:100(4° overnight). High-pressure and temperature Tris-EDTA,pH8.0 was used for antigen retrieval. Negetive ctrl (right) obtaned from antibody was pre-absorbed by immunogen peptide.



Western blot analysis of lysates from HeLa, HUVEC, and COLO cells, using MRPL20 Antibody. The lane on the right is blocked with the synthesized peptide.

Contact information

Orders: order@immunoway.com
 Support: tech@immunoway.com
 Telephone: 877-594-3616 (Toll Free), 408-747-0185
 Website: <http://www.immunoway.com>
 Address: 2200 Ringwood Ave San Jose, CA 95131 USA



Please scan the QR code to access additional product information:
MRP-L20 Rabbit pAb

For Research Use Only. Not for Use in Diagnostic Procedures.

[Antibody](#) | [ELISA Kits](#) | [Protein](#) | [Reagents](#)