

MRP-L12 Rabbit pAb

CatalogNo: YT2845

Key Features

Host Species

- Rabbit

Reactivity

- Human, Mouse

Applications

- WB, ELISA, IHC

MW

- 21kD (Observed)

Isotype

- IgG

Recommended Dilution Ratios

WB 1:500-2000

IHC 1:50-300

ELISA 1:2000-20000

Storage

Storage* -15°C to -25°C/1 year (Do not lower than -25°C)

Formulation Liquid in PBS containing 50% glycerol, 0.5% BSA and 0.02% sodium azide.

Basic Information

Clonality Polyclonal

Immunogen Information

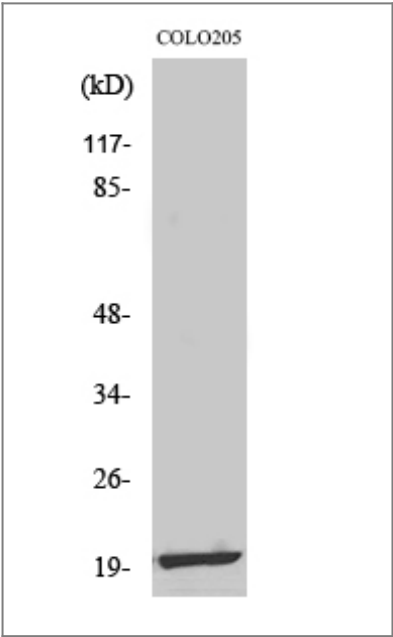
Immunogen The antiserum was produced against synthesized peptide derived from human MRPL12. AA range: 31-80

Specificity MRP-L12 Polyclonal Antibody detects endogenous levels of MRP-L12 protein.

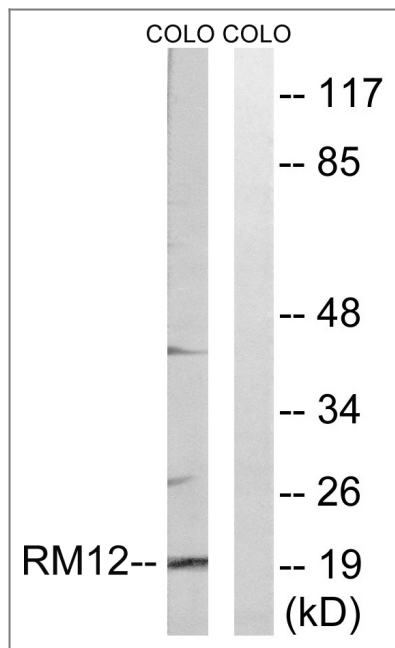
Target Information

| | | | |
|-----------------------|---|-------------------------|--------------------------|
| Gene name | MRPL12 | | |
| Protein Name | 39S ribosomal protein L12 mitochondrial | | |
| | Organism | Gene ID | UniProt ID |
| | Human | 6182 ; | P52815 ; |
| | Mouse | 56282 ; | Q9DB15 ; |
| Cellular Localization | Mitochondrion . | | |
| Tissue specificity | Muscle,Tonsil, | | |
| Function | similarity:Belongs to the ribosomal protein L12P family., | | |

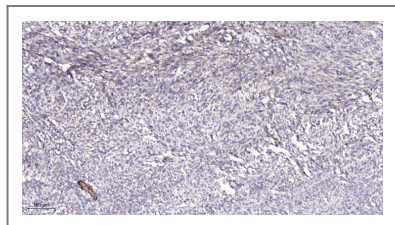
Validation Data



Western Blot analysis of various cells using MRP-L12 Polyclonal Antibody



Western blot analysis of lysates from COLO cells, using MRPL12 Antibody. The lane on the right is blocked with the synthesized peptide.



Immunohistochemical analysis of paraffin-embedded human Colon cancer. 1, Antibody was diluted at 1:200(4° overnight). 2, Tris-EDTA,pH9.0 was used for antigen retrieval. 3,Secondary antibody was diluted at 1:200(room temperature, 45min).

Contact information

Orders: order@immunoway.com
 Support: tech@immunoway.com
 Telephone: 877-594-3616 (Toll Free), 408-747-0185
 Website: <http://www.immunoway.com>
 Address: 2200 Ringwood Ave San Jose, CA 95131 USA



Please scan the QR code to access additional product information:
MRP-L12 Rabbit pAb

For Research Use Only. Not for Use in Diagnostic Procedures.

[Antibody](#) | [ELISA Kits](#) | [Protein](#) | [Reagents](#)