

## MPP9 Rabbit pAb

CatalogNo: YT2824

### Key Features

#### Host Species

- Rabbit

#### Reactivity

- Human, Mouse

#### Applications

- WB, IHC

#### MW

- 78kD (Observed)

#### Isotype

- IgG

### Recommended Dilution Ratios

WB 1:500-2000

IHC 1:50-300

### Storage

**Storage\*** -15°C to -25°C/1 year (Do not lower than -25°C)

**Formulation** Liquid in PBS containing 50% glycerol, 0.5% BSA and 0.02% sodium azide.

### Basic Information

**Clonality** Polyclonal

### Immunogen Information

**Immunogen** The antiserum was produced against synthesized peptide derived from human MPHOSPH9. AA range: 539-588

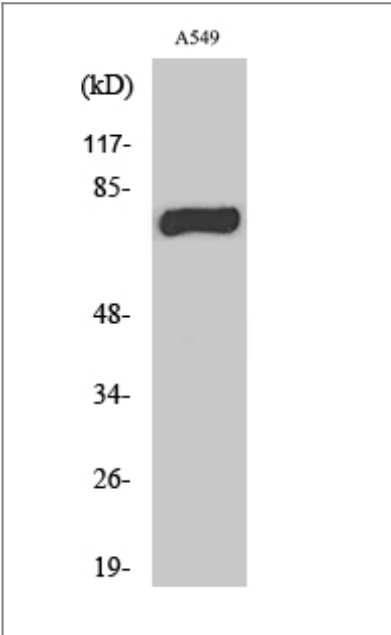
**Specificity** MPP9 Polyclonal Antibody detects endogenous levels of MPP9 protein.

### Target Information

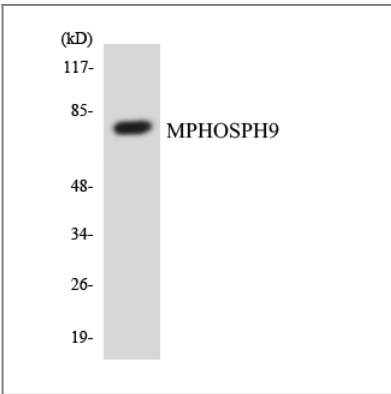
**Gene name** MPHOSPH9

Protein Name	M-phase phosphoprotein 9		
	Organism	Gene ID	UniProt ID
	Human	<a href="#">10198;</a>	<a href="#">Q99550;</a>
	Mouse		<a href="#">A6H5Y1;</a>
Cellular Localization	Cytoplasm, cytoskeleton, microtubule organizing center, centrosome, centriole . Golgi apparatus membrane ; Peripheral membrane protein . Cytoplasm, cytoskeleton, microtubule organizing center, centrosome . Localizes to the distal and proximal end of centriole pairs in duplicated centrosomes. In ciliated cells, localizes to the distal and proximal end of daughter centriole and proximal of the mother centriole but not in the distal end of the mother centriole (PubMed:21399614). Recruited by KIF24 to the distal end of mother centriole where it forms a ring-like structure (PubMed:30375385). .		
Tissue specificity	Lymphoblast,Tongue,		
Function	PTM:Phosphorylated in M (mitotic) phase.,		

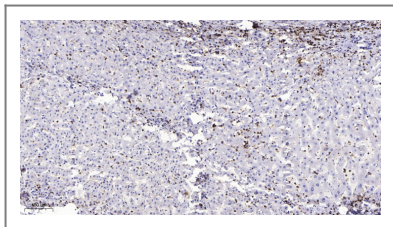
| Validation Data



Western Blot analysis of various cells using MPP9 Polyclonal Antibody



Western blot analysis of the lysates from COLO205 cells using MPHOSPH9 antibody.



Immunohistochemical analysis of paraffin-embedded human liver cancer. 1, Antibody was diluted at 1:200(4° overnight). 2, Tris-EDTA,pH9.0 was used for antigen retrieval. 3,Secondary antibody was diluted at 1:200(room temperature, 45min).

## | Contact information

Orders: [order@immunoway.com](mailto:order@immunoway.com)  
Support: [tech@immunoway.com](mailto:tech@immunoway.com)  
Telephone: 877-594-3616 (Toll Free), 408-747-0185  
Website: <http://www.immunoway.com>  
Address: 2200 Ringwood Ave San Jose, CA 95131 USA



Please scan the QR code  
to access additional  
product information:  
**MPP9 Rabbit pAb**

---

For Research Use Only. Not for Use in Diagnostic Procedures.

[Antibody](#) | [ELISA Kits](#) | [Protein](#) | [Reagents](#)