

## MOX-2 Rabbit pAb

CatalogNo: YT2821

### Key Features

#### Host Species

- Rabbit

#### Reactivity

- Human, Mouse, Rat

#### Applications

- WB, IHC, IF, ELISA

#### MW

- 33kD (Observed)

#### Isotype

- IgG

### Recommended Dilution Ratios

**WB 1:500-1:2000**

**IHC 1:100-1:300**

**ELISA 1:10000**

**IF 1:50-200**

### Storage

#### Storage\*

-15°C to -25°C/1 year (Do not lower than -25°C)

#### Formulation

Liquid in PBS containing 50% glycerol, 0.5% BSA and 0.02% sodium azide.

### Basic Information

#### Clonality

Polyclonal

### Immunogen Information

#### Immunogen

The antiserum was produced against synthesized peptide derived from human MEOX2. AA range:151-200

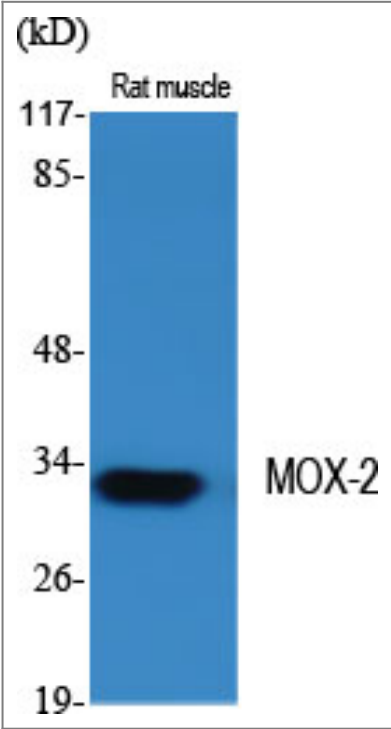
#### Specificity

MOX-2 Polyclonal Antibody detects endogenous levels of MOX-2 protein.

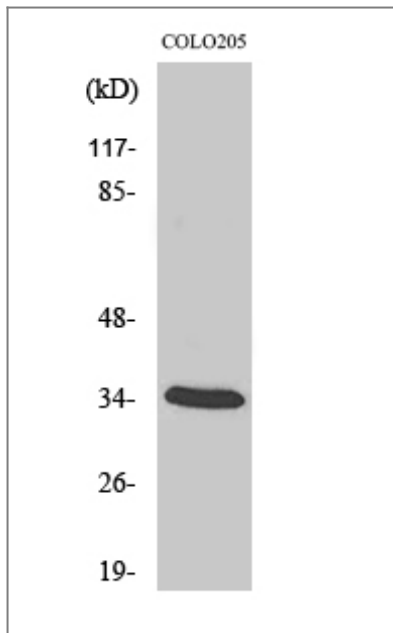
### Target Information

Gene name	MEOX2		
Protein Name	Homeobox protein MOX-2		
	Organism	Gene ID	UniProt ID
	Human	<a href="#">4223</a> ;	<a href="#">P50222</a> ;
	Mouse	<a href="#">17286</a> ;	<a href="#">P32443</a> ;
	Rat	<a href="#">29279</a> ;	<a href="#">P39020</a> ;
Cellular Localization	Nucleus . Nucleus speckle .		
Tissue specificity	Embryo,Heart,Skin,		
Function	Function:Role in mesoderm induction and its earliest regional specification, somitogenesis, and myogenic and sclerotomal differentiation. May have a regulatory role when quiescent vascular smooth muscle cells reenter the cell cycle.,polymorphism:The poly-His region of MEOX2 is polymorphic and the number of His varies in the population.,similarity:Contains 1 homeobox DNA-binding domain.,subunit:Interacts with RNF10.,tissue specificity:Embryo and placenta.,		

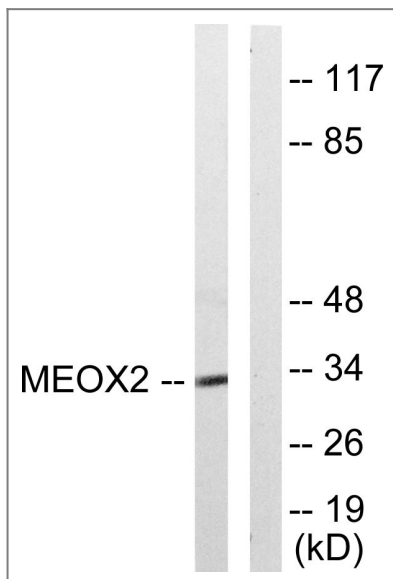
| Validation Data



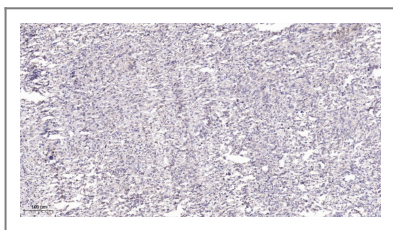
Western Blot analysis of various cells using MOX-2 Polyclonal Antibody diluted at 1:2000



Western Blot analysis of COLO205 cells using MOX-2 Polyclonal Antibody diluted at 1:2000



Western blot analysis of lysates from COLO205 cells, using MEOX2 Antibody. The lane on the right is blocked with the synthesized peptide.



Immunohistochemical analysis of paraffin-embedded human Small intestinal stromal tumor. 1, Tris-EDTA, pH 9.0 was used for antigen retrieval. 2 Antibody was diluted at 1:200 (4° overnight). 3, Secondary antibody was diluted at 1:200 (room temperature, 45 min).

## Contact information

Orders: [order@immunoway.com](mailto:order@immunoway.com)  
 Support: [tech@immunoway.com](mailto:tech@immunoway.com)  
 Telephone: 877-594-3616 (Toll Free), 408-747-0185  
 Website: <http://www.immunoway.com>  
 Address: 2200 Ringwood Ave San Jose, CA 95131 USA



Please scan the QR code to access additional product information:  
**MOX-2 Rabbit pAb**

