

# Moesin/Ezrin/Radixin Rabbit pAb

CatalogNo: YT2813

## Key Features

### Host Species

- Rabbit

### Reactivity

- Human, Mouse, Rat

### Applications

- WB, IHC, IF, ELISA

### MW

- 67kD (Observed)

### Isotype

- IgG

## Storage

**Storage\*** -15°C to -25°C/1 year (Do not lower than -25°C)

**Formulation** Liquid in PBS containing 50% glycerol, 0.5% BSA and 0.02% sodium azide.

## Recommended Dilution Ratios

**WB 1:500-1:2000**

**IHC 1:100-1:300**

**ELISA 1:20000**

**IF 1:50-200**

## Basic Information

**Clonality** Polyclonal

## Immunogen Information

**Immunogen** The antiserum was produced against synthesized peptide derived from human Moesin/Ezrin/Radixin. AA range:524-573

**Specificity** Moesin/Ezrin/Radixin Polyclonal Antibody detects endogenous levels of Moesin/Ezrin/Radixin protein.

## Target Information

**Gene name** MSN

**Protein Name** Moesin

Organism	Gene ID	UniProt ID
Human	<a href="#">4478</a> ; <a href="#">5962</a> ;	<a href="#">P26038</a> ; <a href="#">P35241</a> ; <a href="#">P15311</a> ;
Mouse	<a href="#">17698</a> ; <a href="#">19684</a> ; <a href="#">22350</a> ;	
Rat	<a href="#">81521</a> ; <a href="#">54319</a> ;	<a href="#">O35763</a> ; <a href="#">P31977</a> ;

### Cellular Localization

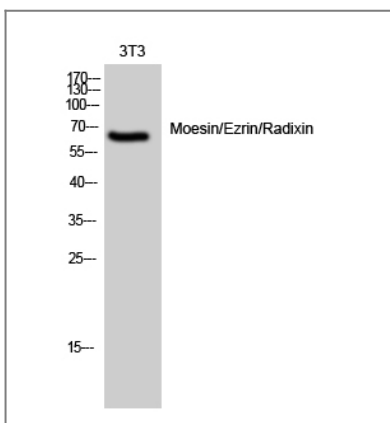
Cell membrane ; Peripheral membrane protein ; Cytoplasmic side . Cytoplasm, cytoskeleton . Apical cell membrane ; Peripheral membrane protein ; Cytoplasmic side . Cell projection, microvillus membrane ; Peripheral membrane protein ; Cytoplasmic side . Cell projection, microvillus . Phosphorylated form is enriched in microvilli-like structures at apical membrane. Increased cell membrane localization of both phosphorylated and non-phosphorylated forms seen after thrombin treatment (By similarity). Localizes at the uropods of T lymphoblasts. .

**Tissue specificity** In all tissues and cultured cells studied.

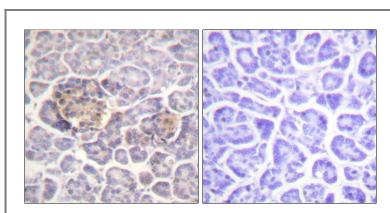
### Function

Function:Probably involved in connections of major cytoskeletal structures to the plasma membrane.,PTM:Phosphorylation on Thr-558 is crucial for the formation of microvilli-like structures.,similarity:Contains 1 FERM domain.,subcellular location:Phosphorylated form is enriched in microvilli-like structures at apical membrane.,subunit:In resting T-cells, part of a PAG1-SLC9A3R1-MSN complex which is disrupted upon TCR activation (By similarity). Binds SLC9A3R1.,tissue specificity:In all tissues and cultured cells studied.,

## Validation Data



Western Blot analysis of 3T3 cells using Moesin/Ezrin/Radixin Polyclonal Antibody diluted at 1:2000



Immunohistochemistry analysis of paraffin-embedded human pancreas tissue, using Moesin/Ezrin/Radixin Antibody. The picture on the right is blocked with the synthesized peptide.

## | Contact information

Orders: [order@immunoway.com](mailto:order@immunoway.com)  
Support: [tech@immunoway.com](mailto:tech@immunoway.com)  
Telephone: 877-594-3616 (Toll Free), 408-747-0185  
Website: <http://www.immunoway.com>  
Address: 2200 Ringwood Ave San Jose, CA 95131 USA



Please scan the QR code to access additional product information:

**Moesin/Ezrin/Radixin  
Rabbit pAb**

---

For Research Use Only. Not for Use in Diagnostic Procedures.

[Antibody](#) | [ELISA Kits](#) | [Protein](#) | [Reagents](#)