

MN1 Rabbit pAb

CatalogNo: YT2802

Key Features

Host Species

- Rabbit

Reactivity

- Human, Mouse

Applications

- WB, ELISA, IHC

MW

- 135kD (Observed)

Isotype

- IgG

Recommended Dilution Ratios

WB 1:500-2000

IHC 1:50-300

ELISA 1:2000-20000

Storage

Storage*

-15°C to -25°C/1 year (Do not lower than -25°C)

Formulation

Liquid in PBS containing 50% glycerol, 0.5% BSA and 0.02% sodium azide.

Basic Information

Clonality

Polyclonal

Immunogen Information

Immunogen

The antiserum was produced against synthesized peptide derived from human MN1. AA range: 821-870

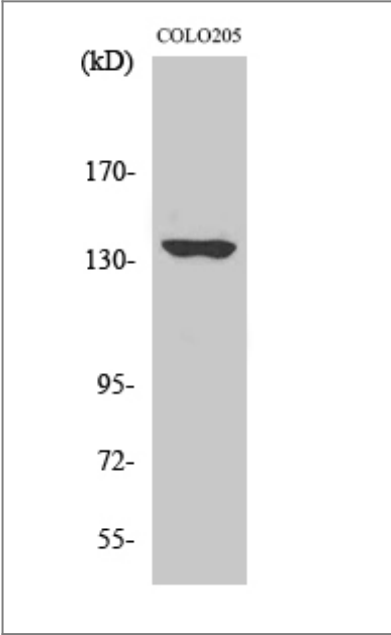
Specificity

MN1 Polyclonal Antibody detects endogenous levels of MN1 protein.

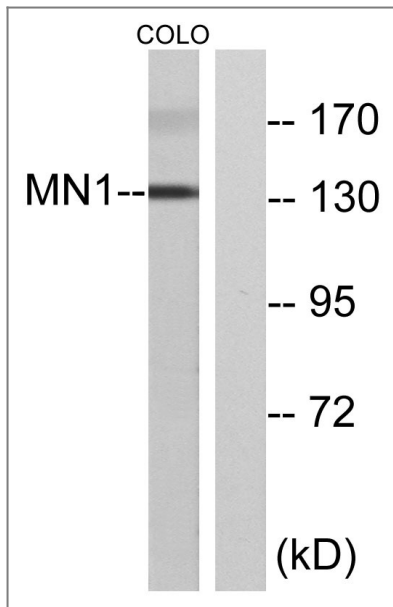
Target Information

Gene name	MN1						
Protein Name	Probable tumor suppressor protein MN1						
	<table><tr><th>Organism</th><th>Gene ID</th><th>UniProt ID</th></tr><tr><td>Human</td><td>4330;</td><td>Q10571;</td></tr></table>	Organism	Gene ID	UniProt ID	Human	4330 ;	Q10571 ;
Organism	Gene ID	UniProt ID					
Human	4330 ;	Q10571 ;					
Cellular Localization	Nucleus .						
Tissue specificity	Widely expressed in fetal and adult tissues. Highest expression is observed in fetal brain and skeletal muscle, and adult skeletal muscle.						
Function	Disease:A chromosomal aberration involving MN1 may be a cause of acute myeloid leukemia (AML). Translocation t(12;22)(p13;q11) with TEL.,Disease:Defects in MN1 may be a cause of meningiomas, slowly growing benign tumors derived from the arachnoidal cap cells of the leptomeninges, the soft coverings of the brain and spinal cord. Meningiomas are believed to be the most common primary tumors of the central nervous system in man.,Function:May play a role in tumor suppression.,tissue specificity:Ubiquitously expressed. Highest levels in skeletal muscle.,						

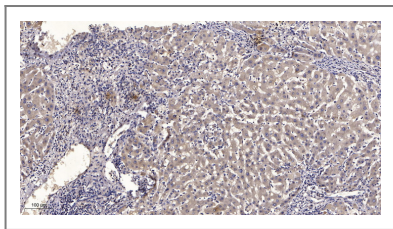
Validation Data



Western Blot analysis of various cells using MN1 Polyclonal Antibody diluted at 1:2000



Western blot analysis of lysates from COLO cells, using MN1 Antibody. The lane on the right is blocked with the synthesized peptide.



Immunohistochemical analysis of paraffin-embedded human liver cancer. 1, Antibody was diluted at 1:200(4° overnight). 2, Tris-EDTA,pH9.0 was used for antigen retrieval. 3,Secondary antibody was diluted at 1:200(room temperature, 45min).

Contact information

Orders: order@immunoway.com
 Support: tech@immunoway.com
 Telephone: 877-594-3616 (Toll Free), 408-747-0185
 Website: <http://www.immunoway.com>
 Address: 2200 Ringwood Ave San Jose, CA 95131 USA



Please scan the QR code to access additional product information:
MN1 Rabbit pAb

For Research Use Only. Not for Use in Diagnostic Procedures.

[Antibody](#) | [ELISA Kits](#) | [Protein](#) | [Reagents](#)