

Mlx Rabbit pAb

CatalogNo: YT2791

| Key Features

Host Species

- Rabbit

Reactivity

- Human, Mouse, Rat

Applications

- WB, IHC, IF, ELISA

MW

- 33kD (Observed)

Isotype

- IgG

| Recommended Dilution Ratios

WB 1:500-1:2000

IHC 1:100-1:300

ELISA 1:10000

IF 1:50-200

| Storage

Storage*

-15°C to -25°C/1 year (Do not lower than -25°C)

Formulation

Liquid in PBS containing 50% glycerol, 0.5% BSA and 0.02% sodium azide.

| Basic Information

Clonality

Polyclonal

| Immunogen Information

Immunogen

The antiserum was produced against synthesized peptide derived from human Mlx. AA range: 111-160

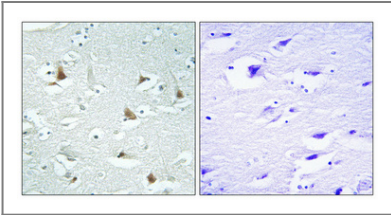
Specificity

Mlx Polyclonal Antibody detects endogenous levels of Mlx protein.

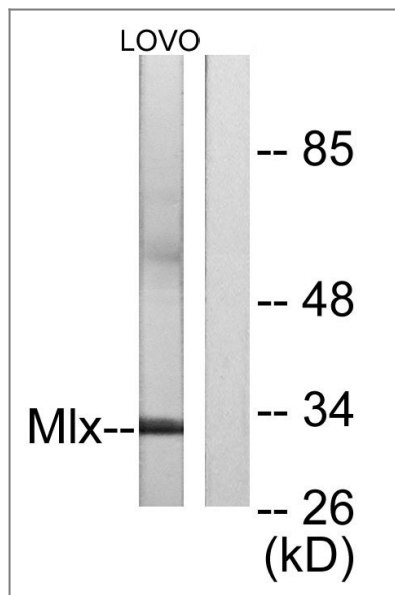
| Target Information

Gene name	MLX		
Protein Name	Max-like protein X		
	Organism	Gene ID	UniProt ID
	Human	6945;	Q9UH92;
	Mouse	21428;	O08609;
Cellular Localization	[Isoform Alpha]: Cytoplasm . Found predominantly in the cytoplasm (PubMed:10918583). . ; [Isoform Beta]: Cytoplasm . Found predominantly in the cytoplasm (PubMed:10918583). . ; [Isoform Gamma]: Nucleus . Found predominantly in the nucleus (PubMed:10918583). .		
Tissue specificity	Expressed in all tissues tested, including spleen, thymus, prostate, ovary, intestine, colon, peripheral blood leukocyte, heart, liver, skeletal muscle and kidney. Lower levels of expression in testis, brain, placenta and lung.		
Function	Function:Transcription regulator. Forms a sequence-specific DNA-binding protein complex with MAD1, MAD4, MNT, WBSCR14 and MLXIP which recognizes the core sequence 5'-CACGTG-3'. The TCFL4-MAD1, TCFL4-MAD4, TCFL4-WBSCR14 complexes are transcriptional repressors. Plays a role in transcriptional activation of glycolytic target genes. Involved in glucose-responsive gene regulation.,similarity:Contains 1 basic helix-loop-helix (bHLH) domain.,subcellular location:Found predominantly in the cytoplasm.,subcellular location:Found predominantly in the nucleus.,subunit:Efficient DNA binding requires dimerization with another bHLH protein. Binds DNA as a heterodimer with MAD1, MAD4, MNT, WBSCR14 and MLXIP. Can also bind DNA as a homodimer.,tissue specificity:Expressed in all tissues tested, including spleen, thymus, prostate, ovary, intestine, colon, peripheral blood leukocyte, heart, liver, skeletal muscle and kidney. Lower levels of expression in testis, brain, placenta and lung.,		

| Validation Data



Immunohistochemical analysis of paraffin-embedded Human brain. Antibody was diluted at 1:100(4° overnight). High-pressure and temperature Tris-EDTA,pH8.0 was used for antigen retrieval. Negative contrl (right) obtained from antibody was pre-absorbed by immunogen peptide.



Western blot analysis of lysates from LOVO cells, using Mlx Antibody. The lane on the right is blocked with the synthesized peptide.

Contact information

Orders: order@immunoway.com
Support: tech@immunoway.com
Telephone: 877-594-3616 (Toll Free), 408-747-0185
Website: <http://www.immunoway.com>
Address: 2200 Ringwood Ave San Jose, CA 95131 USA



Please scan the QR code to access additional product information:
Mlx Rabbit pAb

For Research Use Only. Not for Use in Diagnostic Procedures.

[Antibody](#) | [ELISA Kits](#) | [Protein](#) | [Reagents](#)