

MLK1 Rabbit pAb

CatalogNo: YT2783

Key Features

Host Species

- Rabbit

Reactivity

- Human, Mouse

Applications

- IHC, IF, ELISA

MW

- 122kD (Calculated)

Isotype

- IgG

Recommended Dilution Ratios

IHC 1:100-1:300

ELISA 1:20000

IF 1:50-200

Storage

Storage*

-15°C to -25°C/1 year (Do not lower than -25°C)

Formulation

Liquid in PBS containing 50% glycerol, 0.5% BSA and 0.02% sodium azide.

Basic Information

Clonality

Polyclonal

Immunogen Information

Immunogen

The antiserum was produced against synthesized peptide derived from human MAP3K9. AA range: 561-610

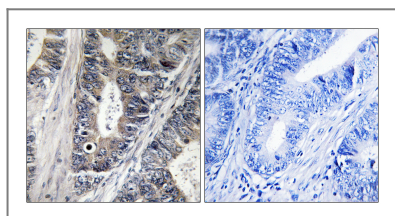
Specificity

MLK1 Polyclonal Antibody detects endogenous levels of MLK1 protein.

Target Information

Gene name	MAP3K9		
Protein Name	Mitogen-activated protein kinase kinase kinase 9		
	Organism	Gene ID	UniProt ID
	Human	4293 ;	P80192 ;
	Mouse	338372 ;	Q3U1V8 ;
Cellular Localization	intracellular,integral component of membrane,		
Tissue specificity	Expressed in epithelial tumor cell lines of colonic, breast and esophageal origin.		
Function	Catalytic activity:ATP + a protein = ADP + a phosphoprotein.,cofactor:Magnesium.,enzyme regulation:Homodimerization via the leucine zipper domains is required for autophosphorylation and subsequent activation.,Function:Activates the JUN N-terminal pathway.,PTM:Autophosphorylation on serine and threonine residues within the activation loop plays a role in enzyme activation. Thr-312 is likely to be the main autophosphorylation site.,similarity:Belongs to the protein kinase superfamily. STE Ser/Thr protein kinase family. MAP kinase kinase kinase subfamily.,similarity:Contains 1 protein kinase domain.,similarity:Contains 1 SH3 domain.,subunit:Homodimer.,tissue specificity:Expressed in epithelial tumor cell lines of colonic, breast and esophageal origin.,		

Validation Data



Immunohistochemistry analysis of paraffin-embedded human colon carcinoma tissue, using MAP3K9 Antibody. The picture on the right is blocked with the synthesized peptide.

Contact information

Orders: order@immunoway.com
 Support: tech@immunoway.com
 Telephone: 877-594-3616 (Toll Free), 408-747-0185
 Website: <http://www.immunoway.com>
 Address: 2200 Ringwood Ave San Jose, CA 95131 USA



Please scan the QR code to access additional product information:
MLK1 Rabbit pAb