

MKP-4 Rabbit pAb

CatalogNo: YT2775

Orthogonal Validated 

Key Features

Host Species

- Rabbit

Reactivity

- Human, Mouse, Rat

Applications

- WB, IHC, IF, ELISA

MW

- 42kD (Observed)

Isotype

- IgG

Recommended Dilution Ratios

WB 1:500-1:2000**IHC 1:100-1:300****IF 1:200-1:1000****ELISA 1:20000****Not yet tested in other applications.**

Storage

Storage*

-15°C to -25°C/1 year (Do not lower than -25°C)

Formulation

Liquid in PBS containing 50% glycerol, 0.5% BSA and 0.02% sodium azide.

Basic Information

Clonality

Polyclonal

Immunogen Information

Immunogen

The antiserum was produced against synthesized peptide derived from human DUSP9. AA range: 151-200

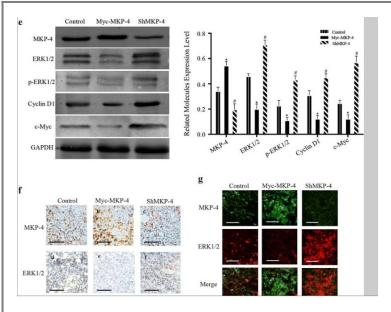
Specificity

MKP-4 Polyclonal Antibody detects endogenous levels of MKP-4 protein.

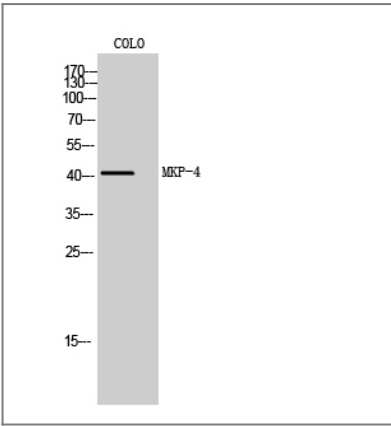
Target Information

Gene name	DUSP9		
Protein Name	Dual specificity protein phosphatase 9		
	Organism	Gene ID	UniProt ID
	Human	1852 ;	Q99956 ;
Cellular Localization	Cytoplasm.		
Tissue specificity	Kidney,Liver,Lung,Placenta,		
Function	Catalytic activity:A phosphoprotein + H(2)O = a protein + phosphate.,Catalytic activity:Protein tyrosine phosphate + H(2)O = protein tyrosine + phosphate.,Function:Inactivates MAP kinases. Has a specificity for the ERK family.,similarity:Belongs to the protein-tyrosine phosphatase family. Non-receptor class dual specificity subfamily.,similarity:Contains 1 rhodanese domain.,similarity:Contains 1 tyrosine-protein phosphatase domain.,		

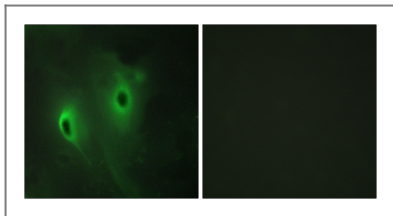
Validation Data



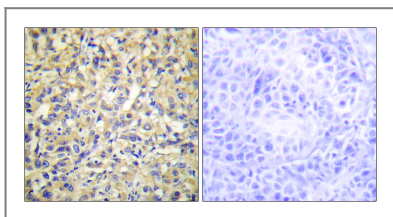
Shen, Zhongyi, et al. "MKP-4 suppresses hepatocarcinogenesis by targeting ERK1/2 pathway." Cancer Cell International 19.1 (2019): 61.



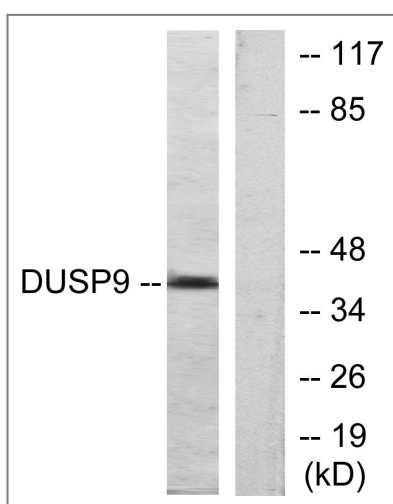
Western Blot analysis of COLO cells using MKP-4 Polyclonal Antibody diluted at 1:1000



Immunofluorescence analysis of HeLa cells, using DUSP9 Antibody. The picture on the right is blocked with the synthesized peptide.



Immunohistochemistry analysis of paraffin-embedded human liver carcinoma tissue, using DUSP9 Antibody. The picture on the right is blocked with the synthesized peptide.



Western blot analysis of lysates from HeLa cells, using DUSP9 Antibody. The lane on the right is blocked with the synthesized peptide.

Contact information

Orders: order@immunoway.com
 Support: tech@immunoway.com
 Telephone: 877-594-3616 (Toll Free), 408-747-0185
 Website: <http://www.immunoway.com>
 Address: 2200 Ringwood Ave San Jose, CA 95131 USA



Please scan the QR code
to access additional
product information:
MKP-4 Rabbit pAb

For Research Use Only. Not for Use in Diagnostic Procedures.

[Antibody](#) | [ELISA Kits](#) | [Protein](#) | [Reagents](#)