

MIPP Rabbit pAb

CatalogNo: YT2767

Key Features

Host Species

- Rabbit

Reactivity

- Human, Mouse, Rat

Applications

- WB, IHC, IF, ELISA

MW

- 60kD (Observed)

Isotype

- IgG

Recommended Dilution Ratios

WB 1:500-1:2000**IHC 1:100-1:300****ELISA 1:10000****IF 1:50-200**

Storage

Storage*

-15°C to -25°C/1 year (Do not lower than -25°C)

Formulation

Liquid in PBS containing 50% glycerol, 0.5% BSA and 0.02% sodium azide.

Basic Information

Clonality

Polyclonal

Immunogen Information

Immunogen

The antiserum was produced against synthesized peptide derived from human MINPP1. AA range: 328-377

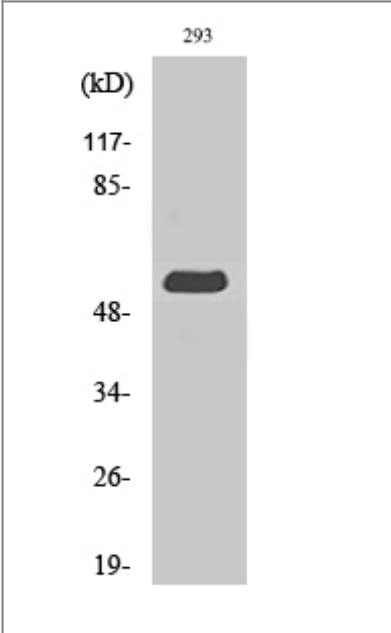
Specificity

MIPP Polyclonal Antibody detects endogenous levels of MIPP protein.

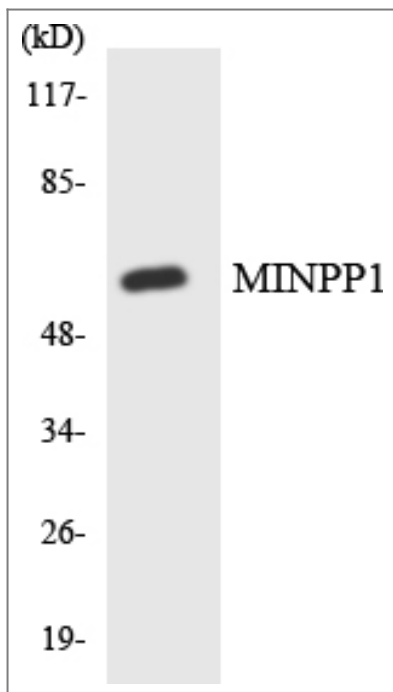
Target Information

Gene name	MINPP1		
Protein Name	Multiple inositol polyphosphate phosphatase 1		
	Organism	Gene ID	UniProt ID
	Human	9562 ;	Q9UNW1 ;
	Mouse	17330 ;	Q9Z2L6 ;
	Rat	29688 ;	Q35217 ;
Cellular Localization	Endoplasmic reticulum lumen .		
Tissue specificity	Widely expressed with highest levels in kidney, liver and placenta.		
Function	Catalytic activity:Myo-inositol hexakisphosphate + H(2)O = myo-inositol pentakisphosphate (mixed isomers) + phosphate.,Disease:Defects in MINPP1 may be involved in follicular thyroid tumors development.,Function:Acts as a phosphoinositide 5- and phosphoinositide 6-phosphatase and regulates cellular levels of inositol pentakisphosphate (InsP5) and inositol hexakisphosphate (InsP6) (By similarity). May play a role in bone development (endochondral ossification).,tissue specificity:Widely expressed with highest levels in kidney, liver and placenta.,		

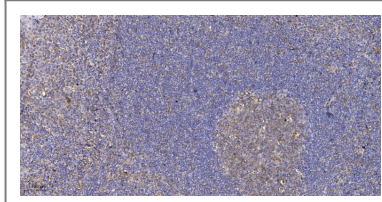
| Validation Data



Western Blot analysis of various cells using MIPP Polyclonal Antibody



Western blot analysis of the lysates from HepG2 cells using MINPP1 antibody.



Immunohistochemical analysis of paraffin-embedded human tonsil. 1, Antibody was diluted at 1:200(4° overnight). 2, Tris-EDTA,pH9.0 was used for antigen retrieval. 3,Secondary antibody was diluted at 1:200(room temperature, 30min).

Contact information

Orders: order@immunoway.com
 Support: tech@immunoway.com
 Telephone: 877-594-3616 (Toll Free), 408-747-0185
 Website: <http://www.immunoway.com>
 Address: 2200 Ringwood Ave San Jose, CA 95131 USA



Please scan the QR code to access additional product information:
MIPP Rabbit pAb

For Research Use Only. Not for Use in Diagnostic Procedures.

[Antibody](#) | [ELISA Kits](#) | [Protein](#) | [Reagents](#)