

## MIP-1 $\alpha$ Rabbit pAb

CatalogNo: YT2765

### Key Features

#### Host Species

- Rabbit

#### Reactivity

- Human,Rat,Mouse,

#### Applications

- IHC,IF,ELISA

#### MW

- 10kD (Calculated)

#### Isotype

- IgG

### Recommended Dilution Ratios

IHC 1:100-1:300

ELISA 1:20000

IF 1:50-200

### Storage

#### Storage\*

-15°C to -25°C/1 year(Do not lower than -25°C)

#### Formulation

Liquid in PBS containing 50% glycerol, 0.5% BSA and 0.02% sodium azide.

### Basic Information

#### Clonality

Polyclonal

### Immunogen Information

#### Immunogen

The antiserum was produced against synthesized peptide derived from human MIP-1 $\alpha$ . AA range:26-75

#### Specificity

MIP-1 $\alpha$  Polyclonal Antibody detects endogenous levels of MIP-1 $\alpha$  protein.

### Target Information

**Gene name** CCL3

**Protein Name** C-C motif chemokine 3

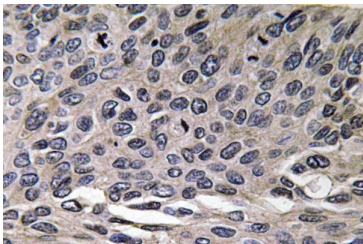
Organism	Gene ID	UniProt ID
Human	<a href="#">6348;</a>	<a href="#">P10147;</a>
Mouse		<a href="#">P10855;</a>

**Cellular Localization** Secreted.

**Tissue specificity** Brain,Leukocyte,Lymphocyte,Natural killer cell,T-cell,

**Function** Function:Monokine with inflammatory and chemokinetic properties. Binds to CCR1, CCR4 and CCR5. One of the major HIV-suppressive factors produced by CD8+ T-cells. Recombinant MIP-1-alpha induces a dose-dependent inhibition of different strains of HIV-1, HIV-2, and simian immunodeficiency virus (SIV).,induction:By TPA or PHA (TPA = 12-O-tetradecanoyl phorbol-13 acetate (tumor promoter); PHA = phytohemagglutinin (T-cell mitogen)).,online information:Macrophage inflammatory protein entry,PTM:N-terminal processed form LD78-alpha(4-69) is produced by proteolytic cleavage after secretion from HTLV1-transformed T-cells.,similarity:Belongs to the intercrine beta (chemokine CC) family.,subunit:Self-associates. Also heterodimer of MIP-1-alpha(4-69) and MIP-1-beta(3-69).,

## Validation Data



Immunohistochemistry analysis of MIP-1α antibody in paraffin-embedded human lung carcinoma tissue.

## Contact information

Orders: [order@immunoway.com](mailto:order@immunoway.com)  
Support: [tech@immunoway.com](mailto:tech@immunoway.com)  
Telephone: 877-594-3616 (Toll Free), 408-747-0185  
Website: <http://www.immunoway.com>  
Address: 2200 Ringwood Ave San Jose, CA 95131 USA



Please scan the QR code to access additional product information:  
**MIP-1α Rabbit pAb**